

# Camera and Scene Setup

**Where to put the camera?**

**How much to show within the frame?**

**When to move the camera?**

# Camera Position

**Catch the most expressive aspect**

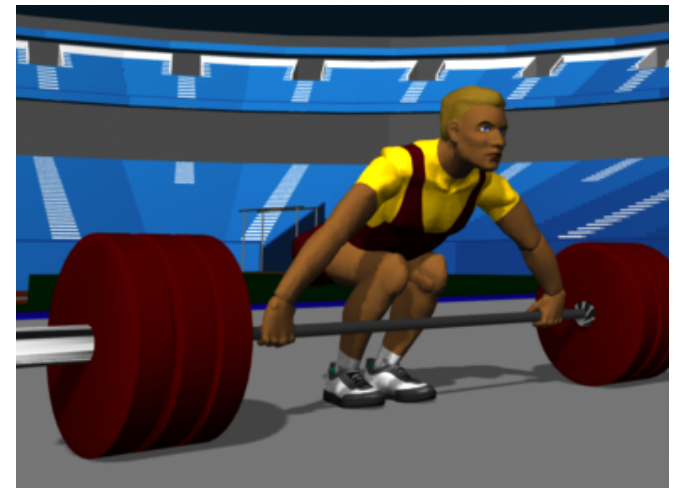


**No unintentional surprises**

# How much to show?



**long shot**

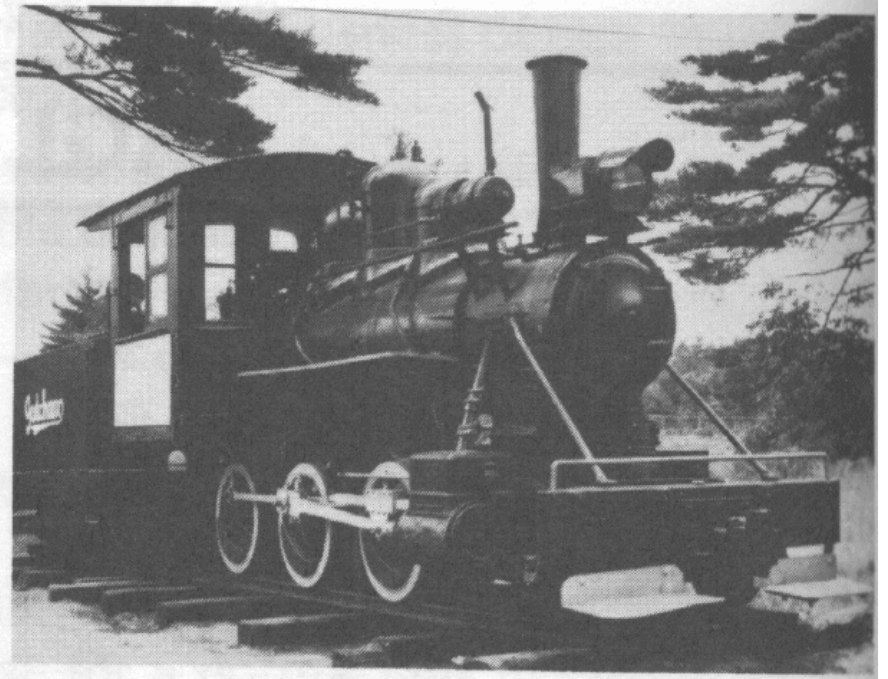
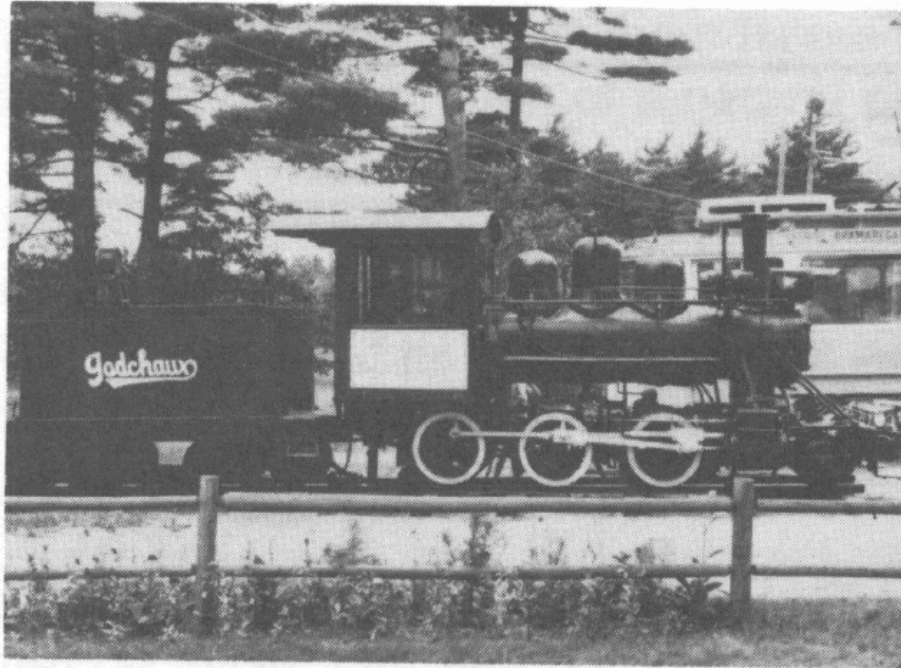


**medium shot**

**closeups**

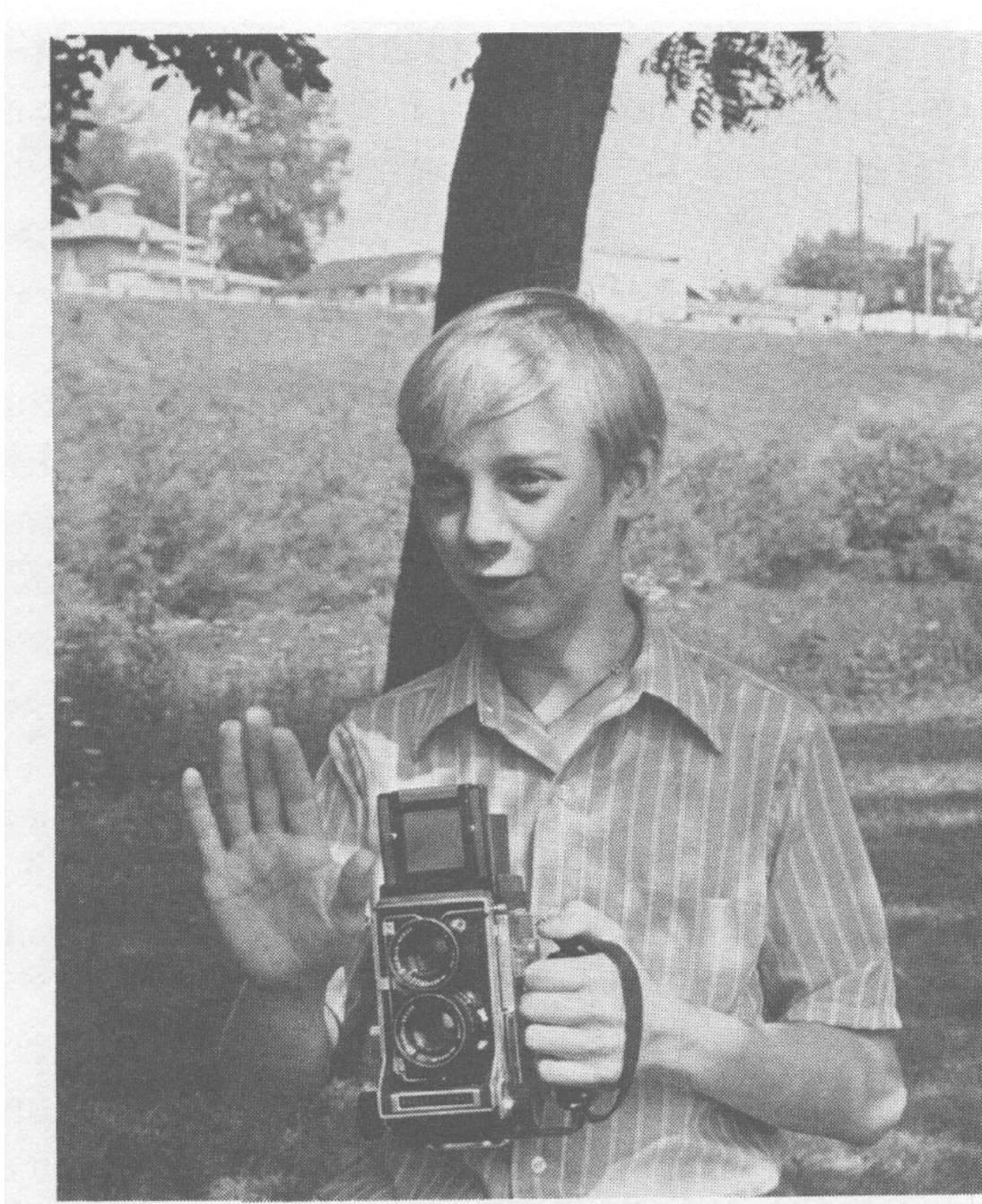


# Camera Angles





# Camera Angles



# Camera Angles



eye level



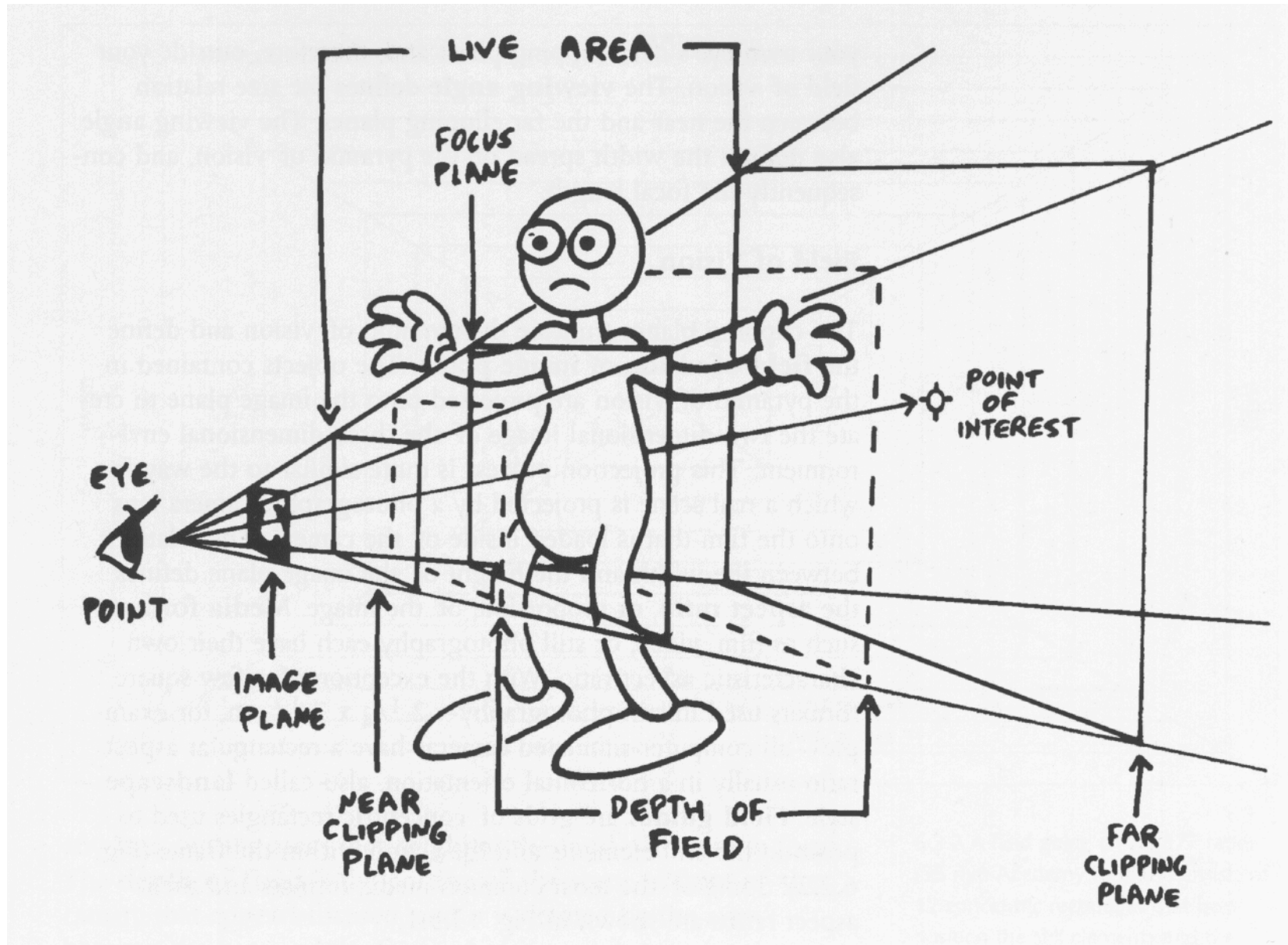
high



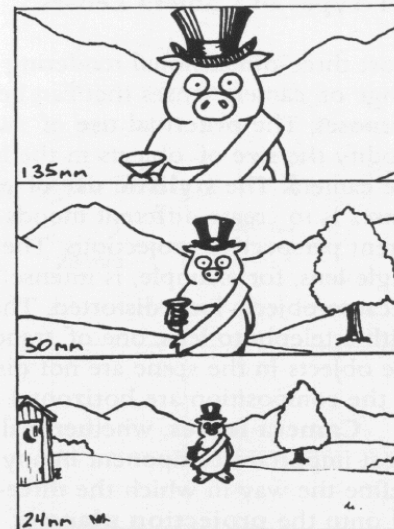
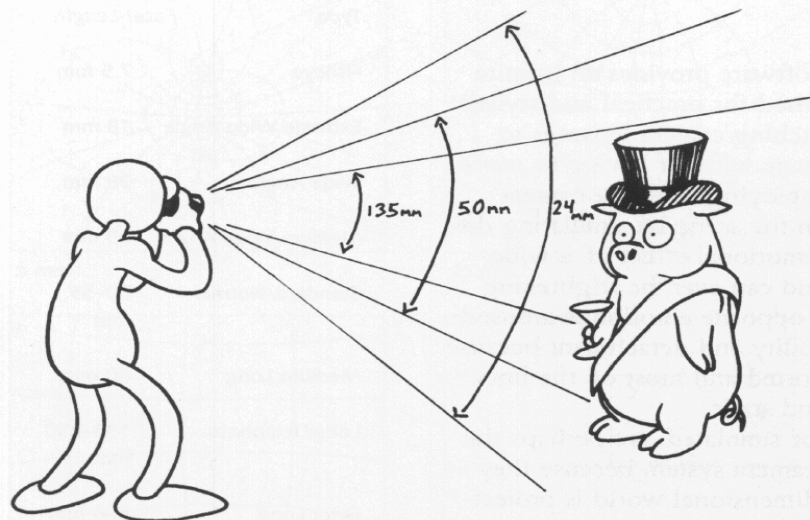
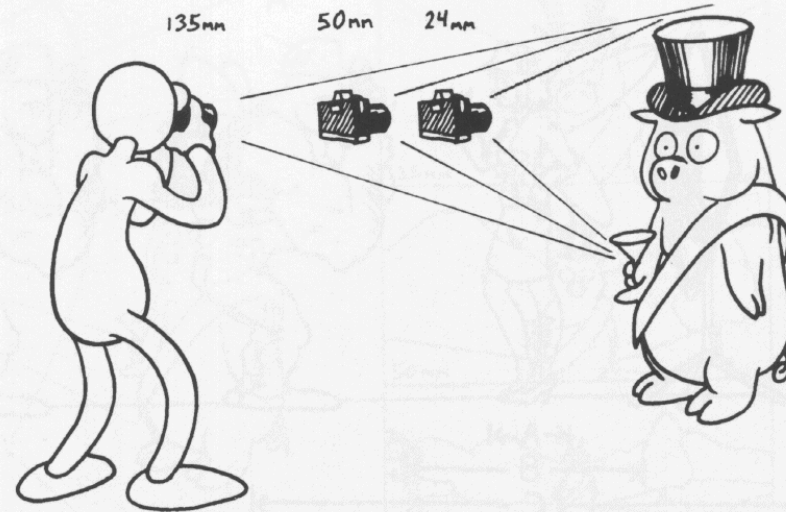
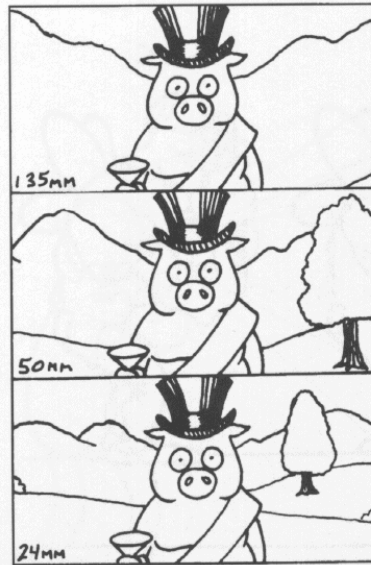
low



# Field of View



# Field of View





# Depth of Field



# Direction of Action

give the subject space to move



# **More emphasis on objects that are**

**closer**

**taller**

**repeated (chorus line)**

**only moving object**

**only still object**



# When should the camera move?

to increase continuity

to keep a subject within view

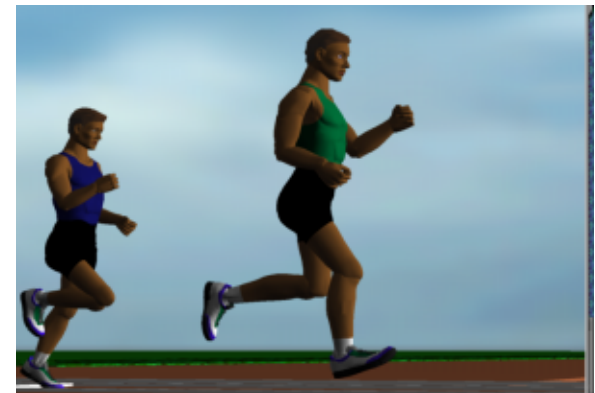


# Camera Motion

pan  
tilt  
dolly  
crane



zoom



track/pan

# Tracking vs. Tracking + Zoom





# **On the Run**

**Robot on treadmill**

**Robots outside (tracking biped)**

**Kangaroo herd (slow motion)**

**Rocks from behind creatures**

**Rocks from front**

**Ostriches I**

**Ostriches II**

**Biped and quadruped (flip)**

**Robot on treadmill**