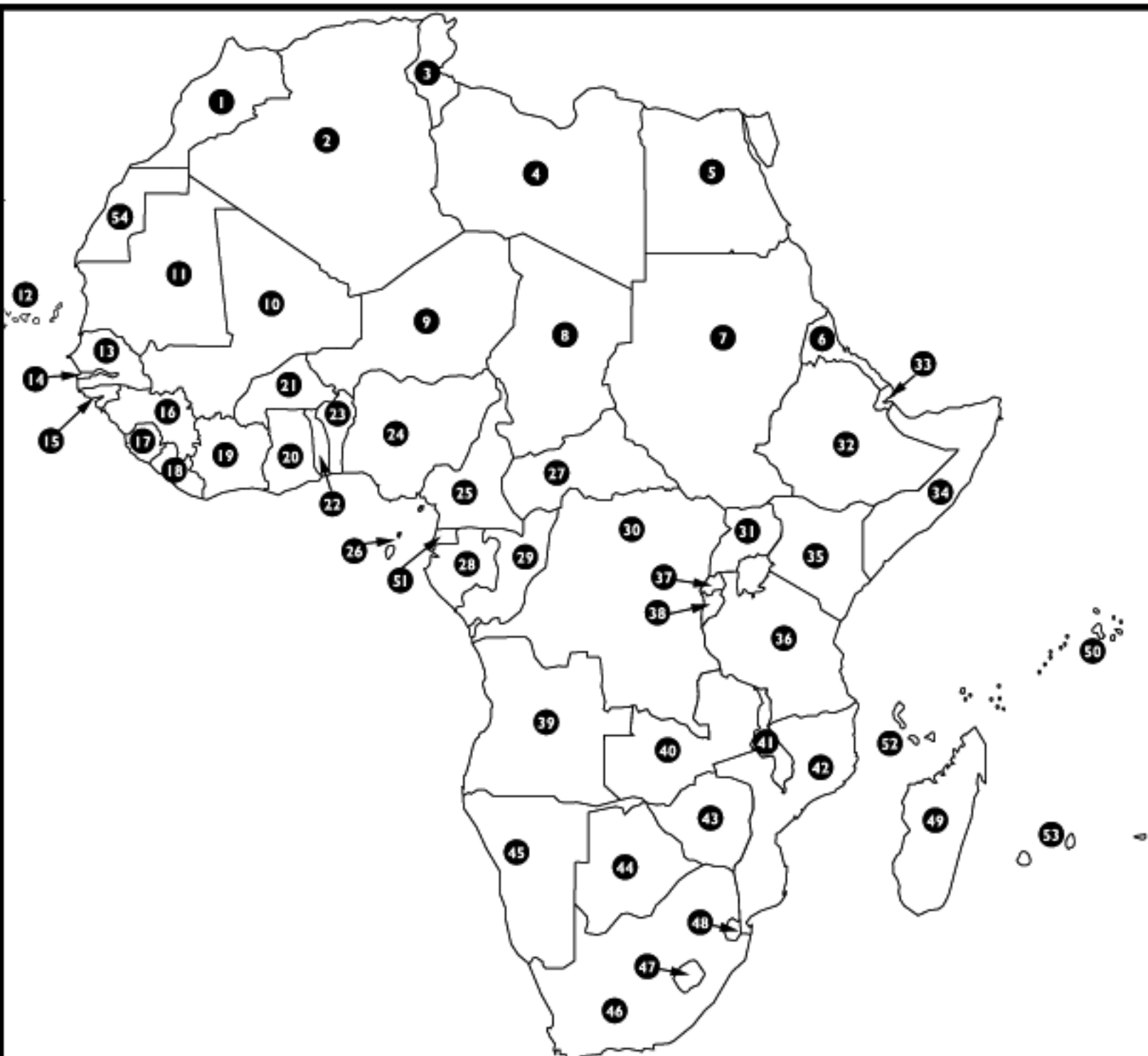


**Instructions:**

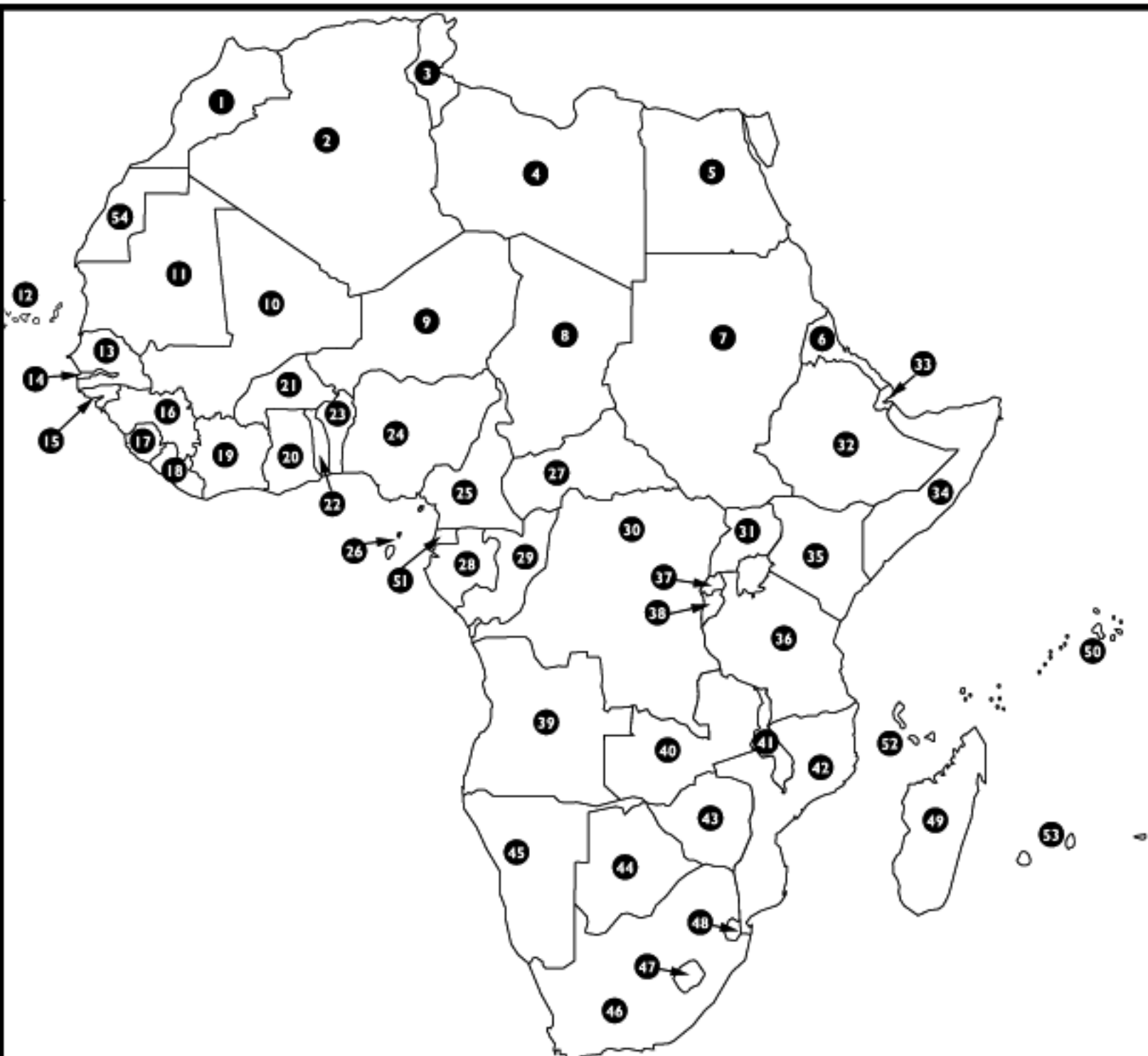
On the following page you will find a map of Africa. All the different countries are shown and numbered. For each country, we want you to think if you will call it LARGE, MEDIUM or SMALL on the basis of size (land area) as shown in the map. Below the map you will find numbered index of all the countries on the map. Please place your answer (LARGE/ MEDIUM/ SMALL) in the blank next to it. Please fill out all the blanks. Thank you.



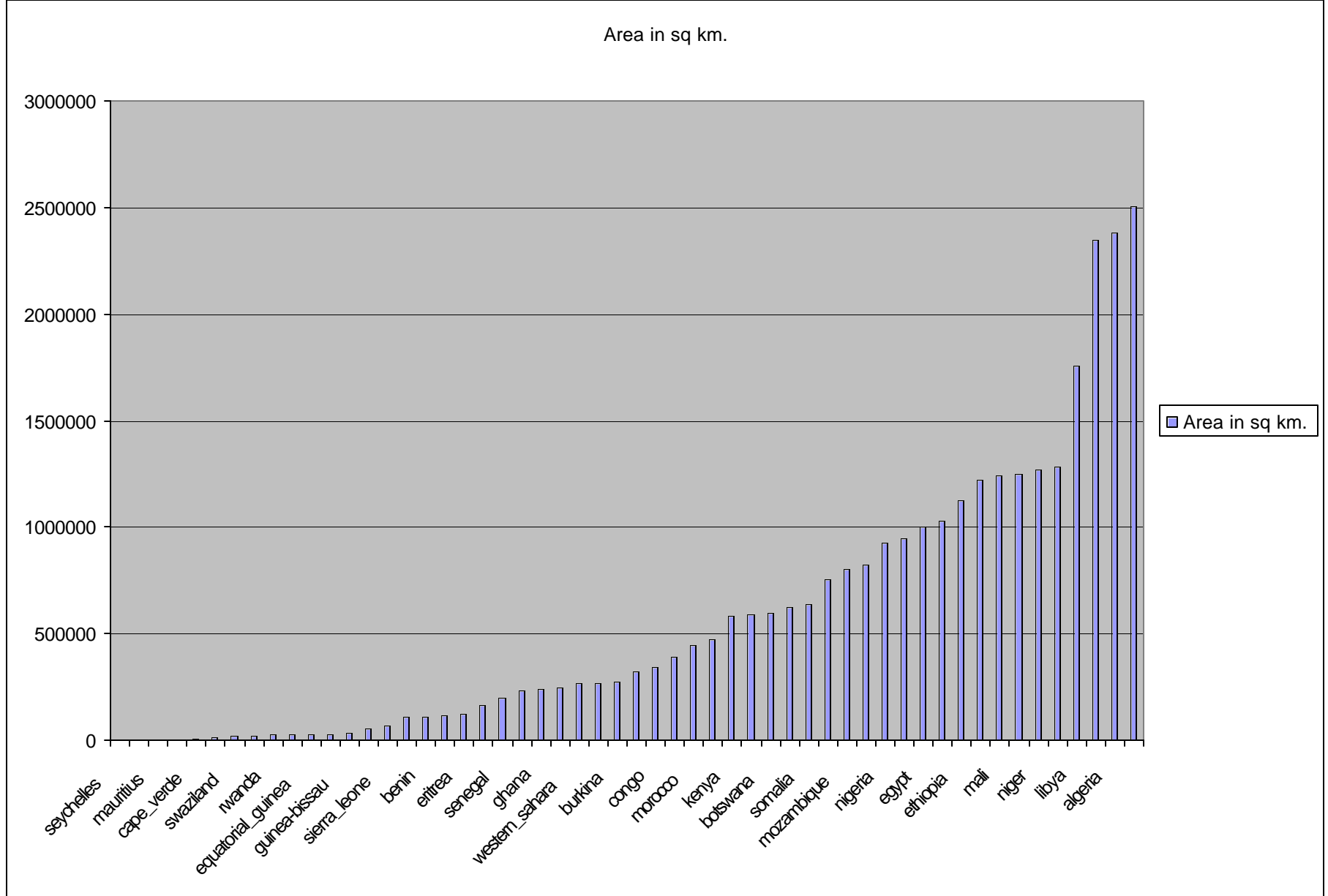
- |    |       |    |       |    |       |    |       |
|----|-------|----|-------|----|-------|----|-------|
| 1  | _____ | 15 | _____ | 29 | _____ | 43 | _____ |
| 2  | _____ | 16 | _____ | 30 | _____ | 44 | _____ |
| 3  | _____ | 17 | _____ | 31 | _____ | 45 | _____ |
| 4  | _____ | 18 | _____ | 32 | _____ | 46 | _____ |
| 5  | _____ | 19 | _____ | 33 | _____ | 47 | _____ |
| 6  | _____ | 20 | _____ | 34 | _____ | 48 | _____ |
| 7  | _____ | 21 | _____ | 35 | _____ | 49 | _____ |
| 8  | _____ | 22 | _____ | 36 | _____ | 50 | _____ |
| 9  | _____ | 23 | _____ | 37 | _____ | 51 | _____ |
| 10 | _____ | 24 | _____ | 38 | _____ | 52 | _____ |
| 11 | _____ | 25 | _____ | 39 | _____ | 53 | _____ |
| 12 | _____ | 26 | _____ | 40 | _____ | 54 | _____ |
| 13 | _____ | 27 | _____ | 41 | _____ |    |       |
| 14 | _____ | 28 | _____ | 42 | _____ |    |       |

**Instructions:**

Please name as many of these countries as you can.



- |    |    |    |    |
|----|----|----|----|
| 1  | 15 | 29 | 43 |
| 2  | 16 | 30 | 44 |
| 3  | 17 | 31 | 45 |
| 4  | 18 | 32 | 46 |
| 5  | 19 | 33 | 47 |
| 6  | 20 | 34 | 48 |
| 7  | 21 | 35 | 49 |
| 8  | 22 | 36 | 50 |
| 9  | 23 | 37 | 51 |
| 10 | 24 | 38 | 52 |
| 11 | 25 | 39 | 53 |
| 12 | 26 | 40 | 54 |
| 13 | 27 | 41 |    |
| 14 | 28 | 42 |    |



	most-frequent	second-most-frequent	least-frequent
Mean	81.2	18.5	0.3
Std Dev	17.8	17.8	1.2

Average number of countries named = 6.5/54 Stdev = 6/54

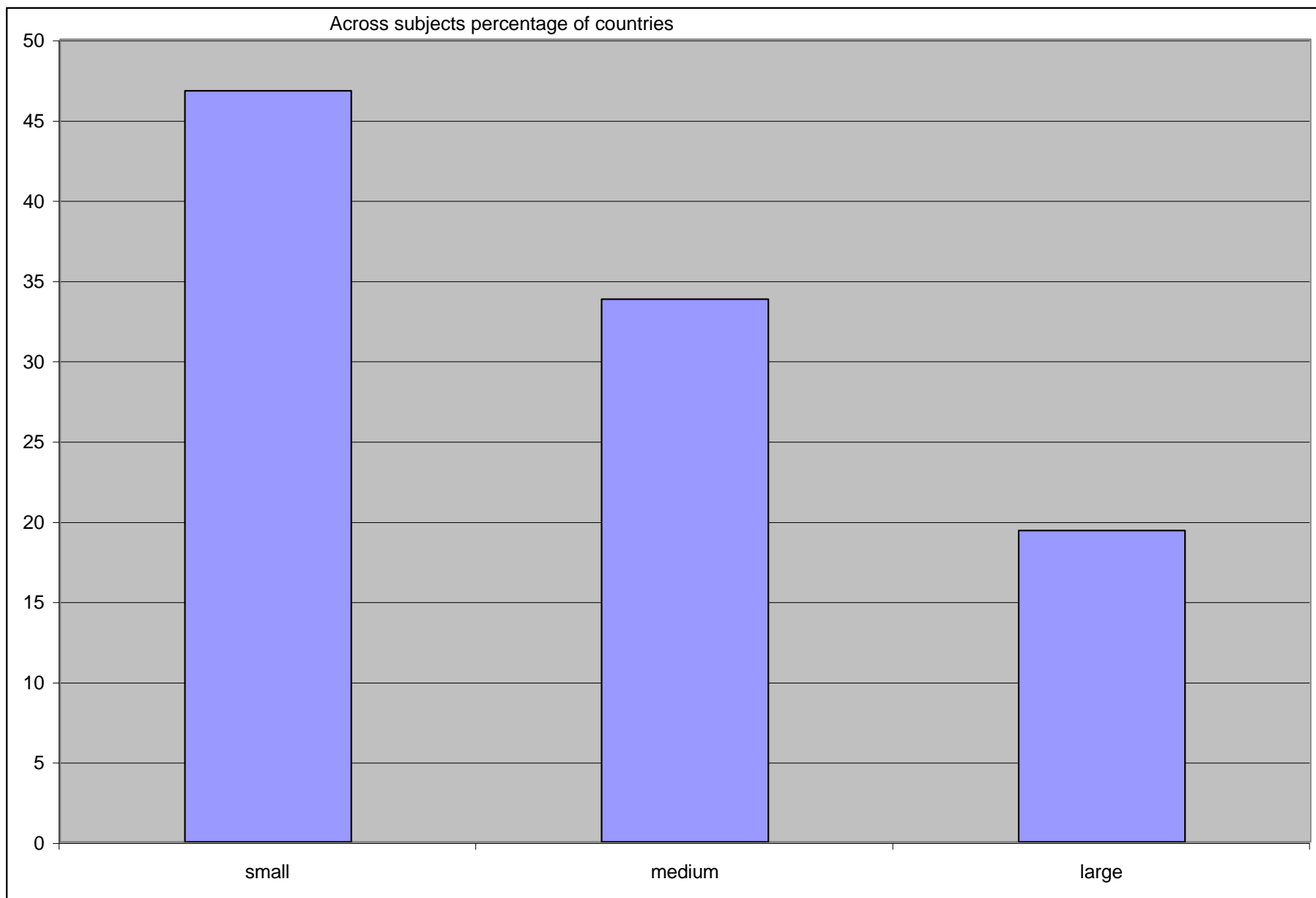
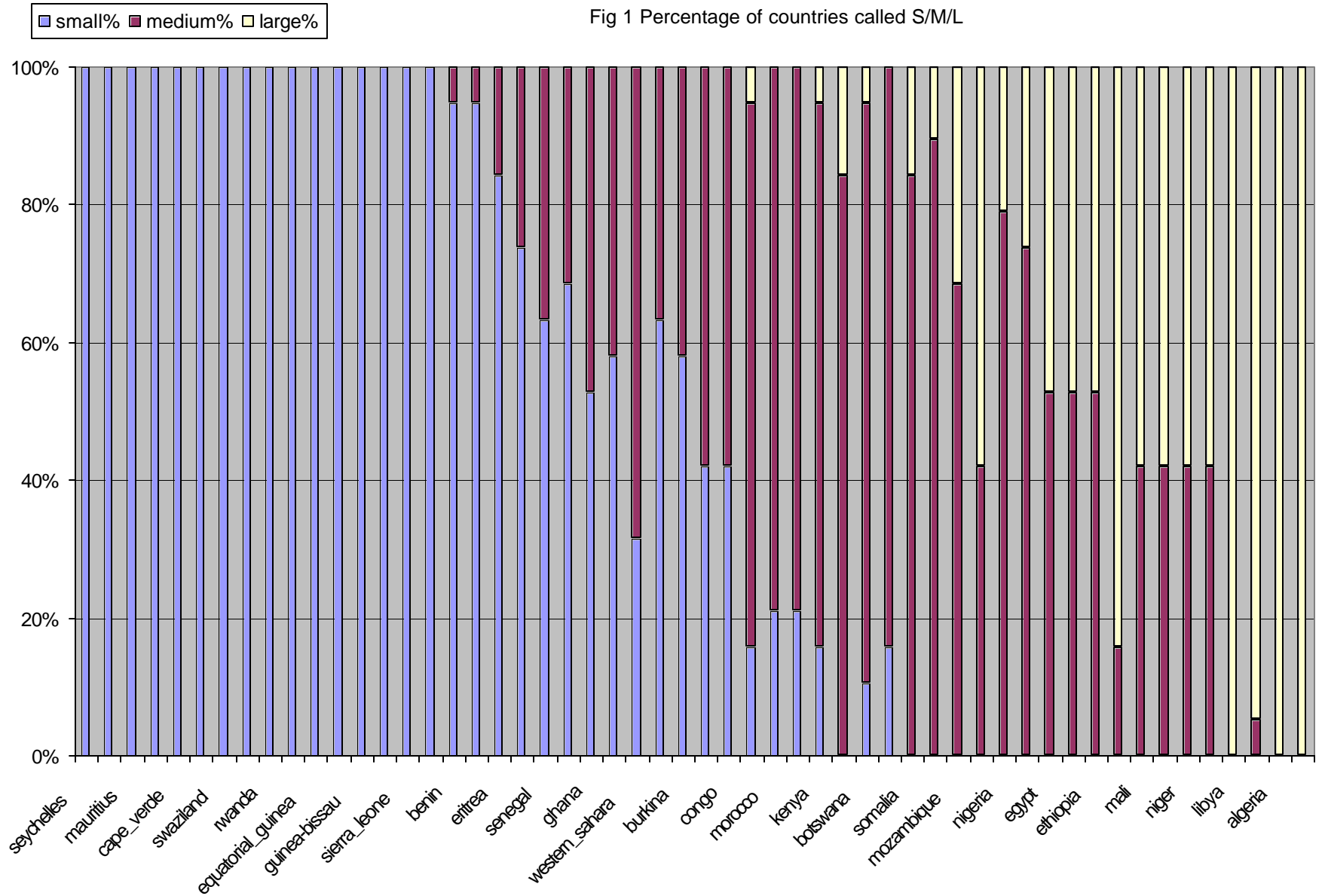


Fig 1 Percentage of countries called S/M/L





most-frequent second-most-frequent least-frequent

Fig 2 Agreement on most frequent choice

