



# Promi-SD™

## User Manual

Version 1.7

by Bluetooth

Enabling Wireless Serial Communications

## **Revision History: User Manual of Promi-SD™**

| Version | Changed Contents   | Date       |
|---------|--|------------|
| 1.1     | Draft version  | 01/02/2003 |
| 1.2     | Added Technical Specifications/Troubleshooting.              | 06/14/2003 |
| 1.3     | Amended Power Consumption data of Promi-SD101/102/202        | 06/24/2003 |
| 1.4     | Amended PromiWIN software interface                          | 07/14/2003 |
| 1.5     | Added feature of Promi-SD version v3b                        | 09/08/2003 |
| 1.6     | Revised by modifying some errors in technical specifications | 12/22/2003 |
| 1.7     | Removed old information on model Promi-SD102                 | 07/22/2004 |

## **Firmware/Hardware Version History**

### **V3b: The latest version**

| Model Name  | Firmware version | Hardware version | Hardware Handshaking                 | DTR/DSR/CDC | Release Date  |
|-------------|------------------|------------------|--------------------------------------|-------------|---------------|
| Promi-SD101 | PSDv3b           | 1.5              | <b>AT command Available (on/off)</b> | N/A         | Sept 8, 2003  |
| Promi-SD102 | PSDv3b           | 2.0              |                                      | Available   | Oct. 10, 2003 |
| Promi-SD202 | PSDv3b           | 2.0              |                                      |             | Sept 8, 2003  |

**\*Note: From Firmware version PSDv3b, customers may choose whether to use hardware flow control using PromiWIN software. If [you have PSDv3b, please use PromiWINver3.0b](#) for configuration.**

### **V3a**

| Model Name  | Firmware version | Hardware version | Hardware Handshaking | DTR/DSR/CDC | Release Date  |
|-------------|------------------|------------------|----------------------|-------------|---------------|
| Promi-SD101 | PSDv3a           | 1.5              | Auto Detection       | N/A         | Aug 11, 2003  |
| Promi-SD102 | PSDv3a           | 2.0              |                      | Available   | July 14, 2003 |
| Promi-SD202 | PSDv3a           | 2.0              |                      |             | July 30, 2003 |

### **V2 series: Old version**

| Model Name  | Firmware version | Hardware version | Hardware Handshaking | DTR/DSR                 |
|-------------|------------------|------------------|----------------------|-------------------------|
| Promi-SD101 | PSDv2h           | 1.0              | Manual               | N/A                     |
| Promi-SD102 | PSDv2i           | 2.0              | Auto Detection       | Available for Loop-back |
| Promi-SD202 | PSDv2h           | 2.0              | Auto Detection       | Available for Loop-back |

# Contents

|  |           |
|--|-----------|
| <b>1. Product Description .....</b>                          | <b>5</b>  |
| 1.1 About Promi-SD™ .....                                    | 5         |
| 1.2 External View .....                                      | 8         |
| 1.3 LED Indicator .....                                      | 9         |
| 1.4 Block Diagram .....                                      | 9         |
| 1.5 Power Supply .....                                       | 9         |
| 1.6 Interface- RS232 / Bluetooth .....                       | 10        |
| 1.6.1 RS232 Interface .....                                  | 11        |
| 1.6.2 Bluetooth Interface .....                              | 13        |
| <b>2. Configuration .....</b>                                | <b>14</b> |
| 2.1 Using Promi-WIN™ .....                                   | 14        |
| 2.1.1 Let's make SD01 to be discoverable/connectable. ....   | 15        |
| 2.1.2 Let's make SD02 to search SD01 and connect to. ....    | 17        |
| 2.1.3 Let's make Auto-Connection between SD01 and SD02. .... | 19        |
| 2.2. Using a Terminal Program .....                          | 21        |
| 2.2.1 Connecting Promi-SD™ to host. ....                     | 21        |
| 2.2.2 Making the first Promi-SD™/Bluetooth connection .....  | 21        |
| 2.2.3 Making Promi-SD™ do INQUIRY SCAN and PAGE SCAN .....   | 22        |
| 2.2.4 Releasing the existing Bluetooth connection .....      | 23        |
| 2.2.5 Automatic connection of two Promi-SD™ Units .....      | 24        |
| 2.2.6 AT command vs. Operational Status .....                | 26        |
| <b>3. Technical Specifications .....</b>                     | <b>27</b> |
| 3.1 Default Serial Settings .....                            | 27        |
| 3.2 Power Consumption .....                                  | 27        |
| 3.3 Environmental .....                                      | 28        |
| 3.4 Serial Interface .....                                   | 28        |
| 3.5 Maximum distance between Promi-SD™s .....                | 29        |
| <b>4. Troubleshooting.....</b>                               | <b>30</b> |

|           |   |           |
|-----------|---|-----------|
| 4.1       | ON/OFF of Hardware Flow control.....                      | 30        |
| 4.2       | Enabling/Disabling of Response Signals.....               | 31        |
|           | -OK, CONNECT, DISCONNECT & ERROR.....                     | 31        |
| 4.3       | For DCE connection .....                                  | 32        |
| 4.4       | Hardware Reset.....                                       | 32        |
| 4.5       | How to get Bluetooth CF cards connected to Promi-SD ..... | 32        |
| <b>5.</b> | <b>Optional Antennas .....</b>                            | <b>35</b> |
| <b>6.</b> | <b>For Multi-Serial Connections .....</b>                 | <b>37</b> |
| 6.1       | Promi-MSP™ .....  | 37        |
| <b>7.</b> | <b>Legal Notice .....</b>                                 | <b>38</b> |
| <b>9.</b> | <b>About this Manual.....</b>                             | <b>40</b> |
|           | <b>Appendix A: Power Adaptor Specification .....</b>      | <b>41</b> |
|           | <b>Appendix B: AT command sets .....</b>                  | <b>44</b> |

# 1. Product Description

## 1.1 About Promi-SD™

---

Promi-SD™ is developed for long range, easy-to-install, low-cost, wireless serial communications. Provided is point-to-point wireless connection without standard RS232 cables.

For point-to-multipoint connections, please refer to our [Promi-MSP™](#), providing all the features of RS485.

Product line

| Model Name  | Part No.    | Spec.  |
|-------------|-------------|--|
| Promi-SD101 | PSD00-10100 | Class 2 / Output Power: 2.5mW (4dBm)<br>5V DC power supply<br>Rechargeable Li-poly Battery, internal<br>w/ Power Adapter<br>w/ Setup Software & manual on CD   |
| Promi-SD202 | PSD00-20200 | Class 1 / Output Power: 63mW (18dBm)<br>5V DC power supply<br>w/o Battery & Power Adapter<br>w/ Setup Software & manual on CD<br>w/ USB Power Cable & DC Power Cable<br>(Optional: 5V Power Adapter) |



Fig. 1.1.1 A CD-ROM inclusive a setup software (Promi-WIN™) and user manual

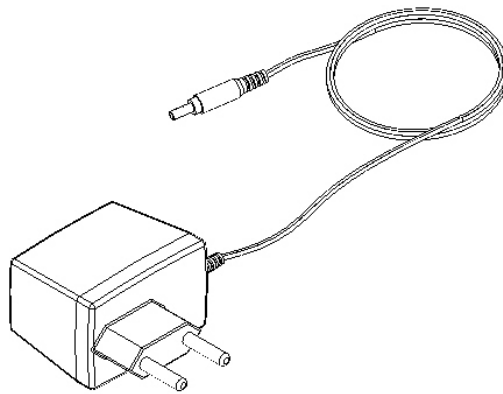


Fig. 1.1.2 Optional Power Adaptor  
Part no. PSD00-00010

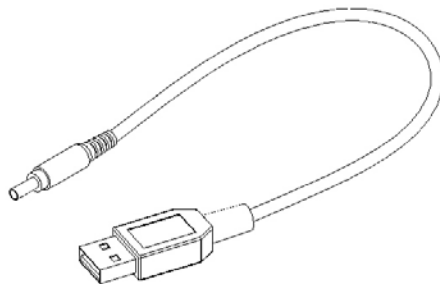


Fig. 1.1.3 USB Power Adaptor  
Part no. PSD00-00020

\*You may use USB port to supply power to Promi-SD™ using this USB power cable

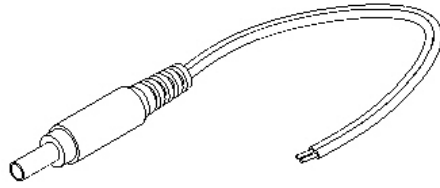


Fig. 1.1.4 DC Power Cable

Part no. PSD00-00030

\*Red colored line of DC power cable is for '+'

## 1.2 External View

---

Promi-SD™

Dimensions: 60 x 26 x 16 (mm)

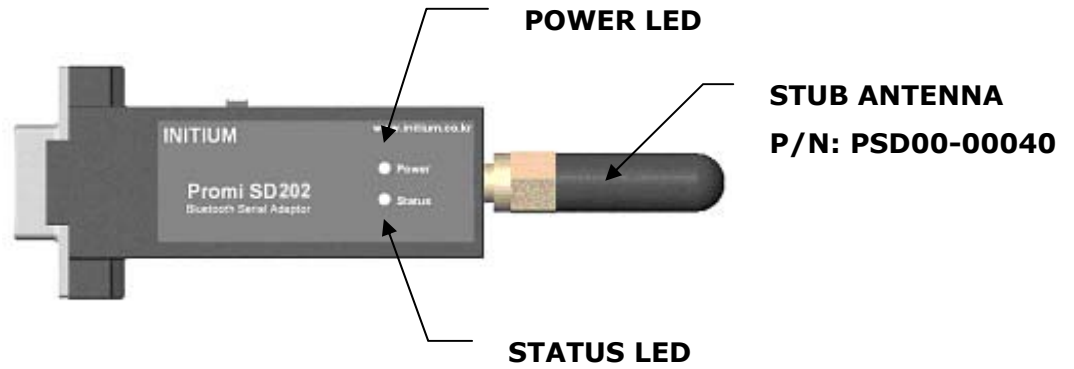


Figure 1.2.1 Promi-SD™ top view

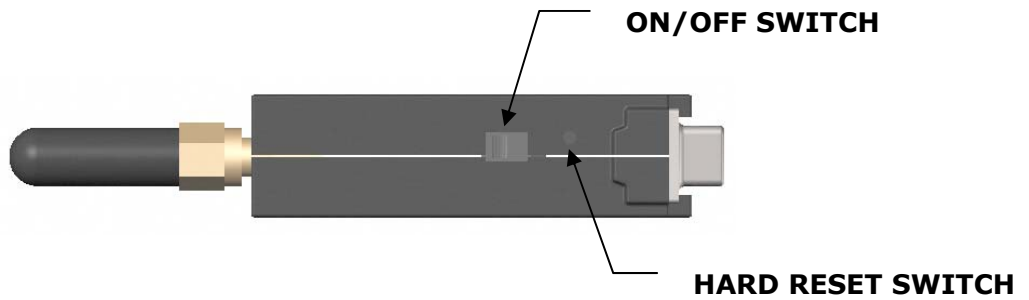


Figure 1.2.2 Promi-SD™ right side view

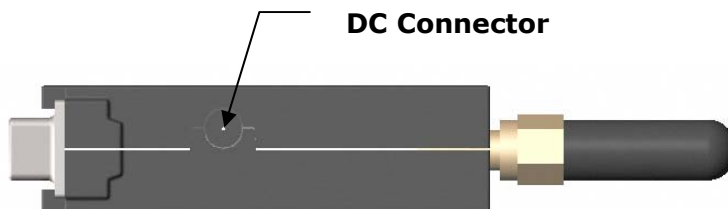


Figure 1.2.3 Promi-SD™ left side view

Please refer to the [1.5 Power Supply](#) section for Promi-SD™ power options



## 1.3 LED Indicator

---

The Promi-SD™ STATUS LED indicates the following:

Amber STATUS LED indicates standard mode on Promi-SD™ power-up.

Green STATUS LED indicates Promi-SD™ is connected to another Bluetooth device

Green flashing STATUS LED every second indicates Promi-SD™ INQUIRY operation

Green flashing STATUS LED every 3 seconds indicates Promi-SD™ INQUIRY SCAN or PAGE SCAN operation

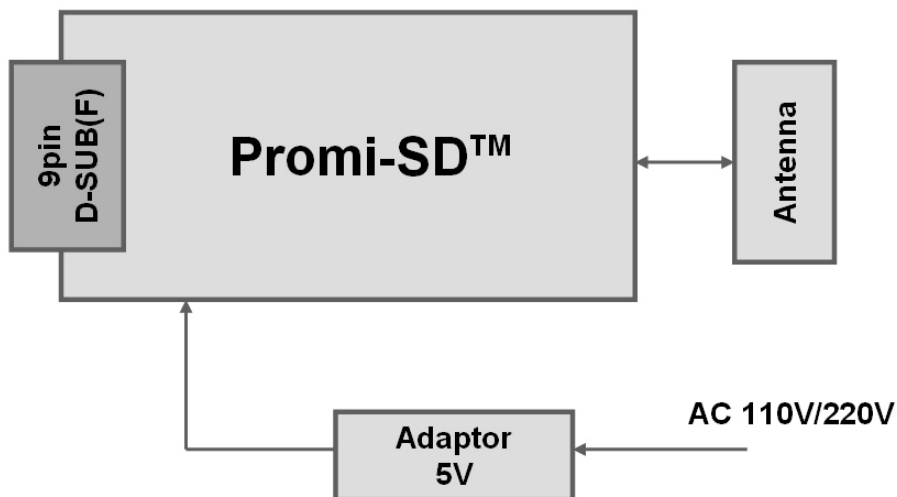
Amber POWER LED of Promi-SD101 indicates battery is being charged.

Green POWER LED of Promi-SD101 indicates battery is fully charged.

Green POWER LED of Promi-SD202 indicates power is being supplied.

## 1.4 Block Diagram

---



## 1.5 Power Supply

---

Power may be supplied by following ways:

- Power via a standard AC-plug DC-adapter (p/n: PSD00-00010)
- Power via USB power cable (p/n: PSD00-00020)
- Power via DC power cable (p/n: PSD00-00030)
- Power via pin 9 of D-SUB connector.

Promi-SD101 can be recharged by 4 ways above.



Figure 1.5.1. DC plug polarity

Promi-SD101 (Class2): 5V+/-10%, 500mA minimum

Promi-SD202 (Class1): 4V~12V, 150mA minimum

Current Consumption Data at different speeds of serial communications:

| Condition of Baud Rate | Current Consumption |               | Battery Life<br>(Promi-SD101) |
|------------------------|---------------------|---------------|-------------------------------|
|                        | (Promi-SD101)       | (Promi-SD202) |                               |
| 9600bps                | 35.3 mA             | 40 mA         | 5 hrs 20 min                  |
| 115200bps              | 40 mA               | 72 mA         | 4 hrs 30 min.                 |

## 1.6 Interface- RS232 / Bluetooth

### 1.6.1 RS232 Interface

Promi-SD™ has a 9-PIN DSUB (female) connector as shown below in Fig 1.7.1.

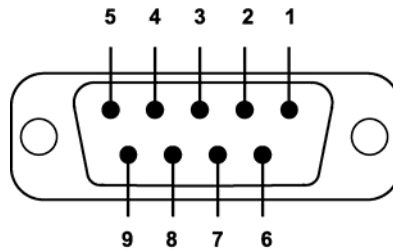


Figure 1.7.1 9-PIN DSUB (Female)

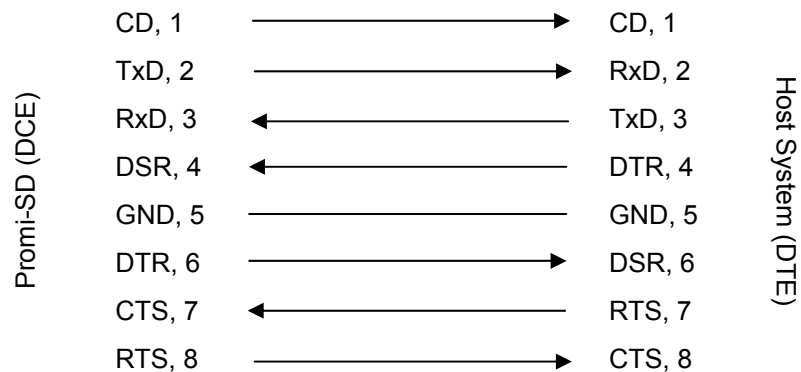
- The serial interface is RS232 DCE configured; a DTE device can be connected.
- Baud rate: 1200~115200 bps  
230400bps (for Promi-SD102/202/ESD)
- Hardware flow control (RTS/CTS)

| Pin | Signal | Direction |
|-----|--------|-----------|
| 1   | CD     | Output    |
| 2   | TxD    | Output    |
| 3   | RxD    | Input     |
| 4   | DSR    | Input     |
| 5   | GND    | -         |
| 6   | DTR    | Output    |
| 7   | CTS    | Input     |
| 8   | RTS    | Output    |
| 9   | Vcc    | Input     |

Table 1.7.1. Promi-SD™ 9-PIN Specification

Promi-SD™ is designed to operate as DCE (Data Communications Equipment).  
To connect to DTE (Data Terminal Equipment), for example a PC or a laptop, a

straight cable must be used as in below.



\*DTR/DSR of Promi-SD™ will be functioned for either Loop-back operation or for full transfer. Users may select a function of DTR/DSR using AT command-ATS14. **Default value of ATS14 is 1.**

- ATS14=1<cr>: Default setting. Users may use DTR/DSR lines for communications
- ATS14=0<cr>: Users may use DTR/DSR lines for Loop-back only.
- ATS14?: To see current status of ATS14.

\*Default setting of CD line in Promi-SD is to show the status of Bluetooth connection. If users want to use CD line to send CDC signal to the other side, such as for connection between Promi-SD and DCE device, users need to configure ATS13.

- ATS13=0<cr>: Default setting. Users may use CDC line for checking Bluetooth connection
- ATS13=1<cr>: Users may receive CDC signal from other Promi-SD.  
(This function will be available from future version of Promi-SD for DCE devices)
- ATS13?: To see current status of ATS13.

## 1.6.2 Bluetooth Interface

|                         |   |
|-------------------------|---|
| Bluetooth Specification | V 1.1   |
| Level                   | 4 dBm (Promi-SD101)<br>18 dBm (Promi-SD202)   |
| Range                   | ~30m (Promi-SD101)<br>~100m (Promi-SD202)     |
| Bluetooth protocols     | RFCOMM, L2CAP, SDP                            |
| Supported Profiles      | General Access Profile<br>Serial Port Profile |

## 2. Configuration

### 2.1 Using Promi-WIN™

---

With Promi-SD™, Bluetooth wireless connections can be made to any Bluetooth device supporting SPP (Serial Port Profile). Especially when using the Promi-SD™ as a cable replacement, take advantage of the Promi-SD™ automatic connection feature. Once a pair of Promi-SDs is set for this feature, they automatically connect whenever powered up. A pair of Promi-SD units, within their radio range, may be used as a virtual RS-232 cable.

To make wireless connections between two Bluetooth devices, one device should be in *Discoverable* (INQUIRY SCAN) and *Connectable* (PAGE SCAN) as well. Most Bluetooth devices are set to *Discoverable* and *Connectable* in manufacture. However, to maximize internal battery life, Promi-SD INQUIRY SCAN and PAGE SCAN are disabled. To make Promi-SD respond to the INQUIRY and PAGE operations of other Bluetooth devices, activate INQUIRY SCAN and PAGE SCAN.

Before making the first Bluetooth connection with SD units, be prepared with a pair of SD units and also install the PromiWIN™ program on the CD enclosed in the Promi-SD™ product package.

## Configuration By Promi-WIN™

---

Please prepare two of the Promi-SDs to make connection.

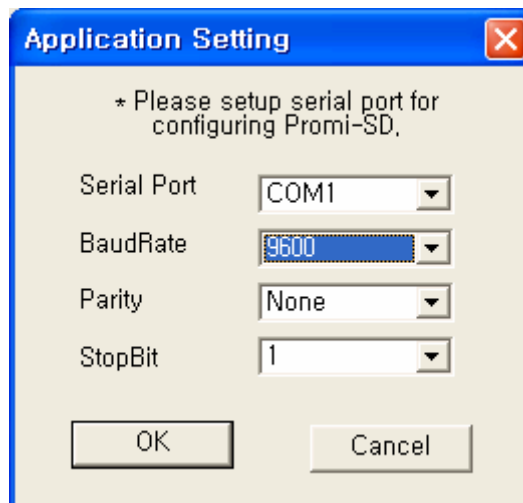
Let's say 1st unit as 'SD01' and 2nd unit as 'SD02' in this guide book. Make sure that power to both SD01 and SD02 are ALWAYS supplied, even when you detach from your computer.

---

### 2.1.1 Let's make SD01 to be discoverable/connectable.

In this procedure, SD01 will become discoverable/connectable to be able to receive connection from SD02.

- 1-1. Attach SD01 to your PC, and start Promi-WIN™
- 1-2. Start PromiWIN™ then you will see a pop-up window for configuration of PromiWIN™.

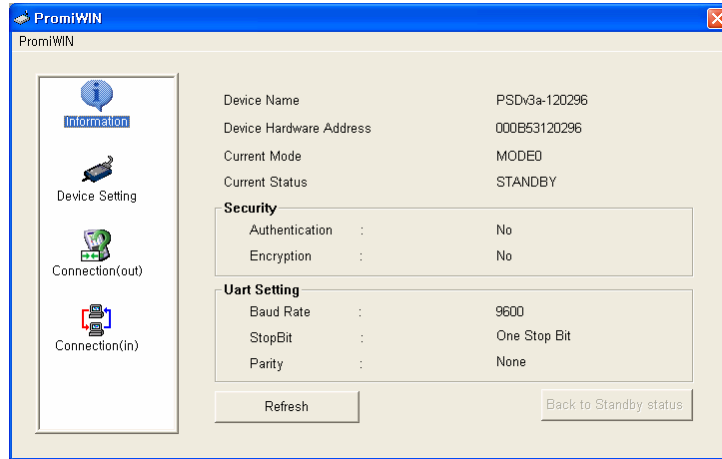


<Fig. 1.1>

- 1-3. Select the number of the Serial port where SD01 is attached as in the Fig. 1.1 above.
- 1-4. Users need to select exactly **same** Baud/Parity/StopBit **as real settings of attached SD01**. **9600/No/OneStopBit** are default initial settings of all of Promi-SDs.
- 1-5. Press OK button when finished.

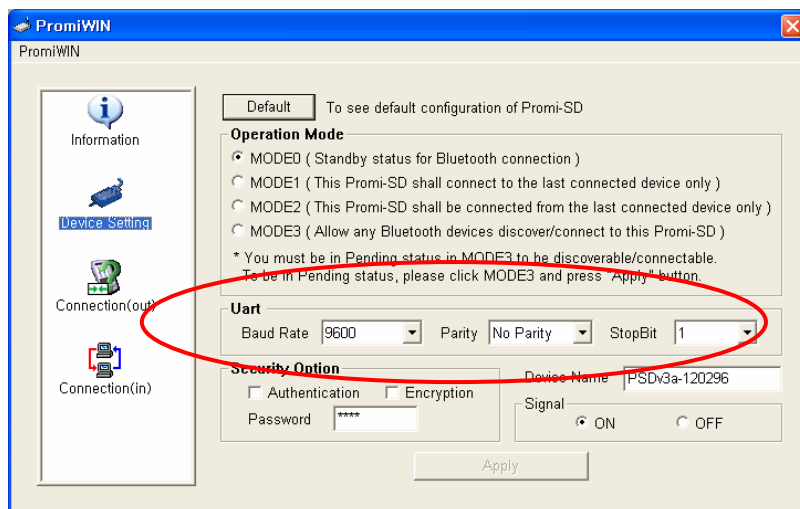
1-6. Open 'Promi-WIN™->Start Configuration' on the upper left menu.

Promi-WIN™ will bring the information on the attached **SD01** as in Fig. 1.2



<Fig. 1.2>

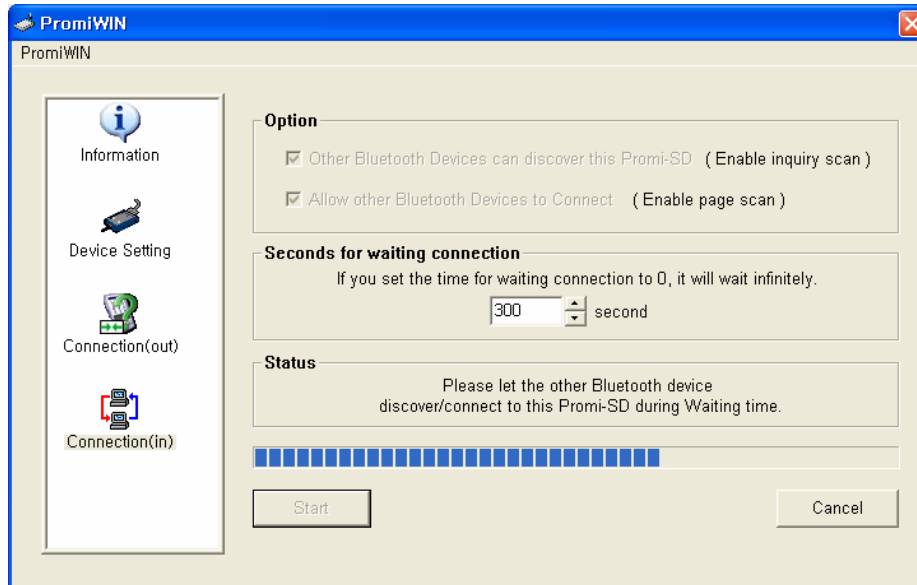
1-7. Click the 'Device Setting' icon in the list control box. **Users may change the Baud rate/Parity/StopBit to meet their individual needs.**



<Fig. 1.3>

1-8. Click the '**Connection(in)**' icon in list control box. Check both options and then click the START button as shown in Fig. 1.5.



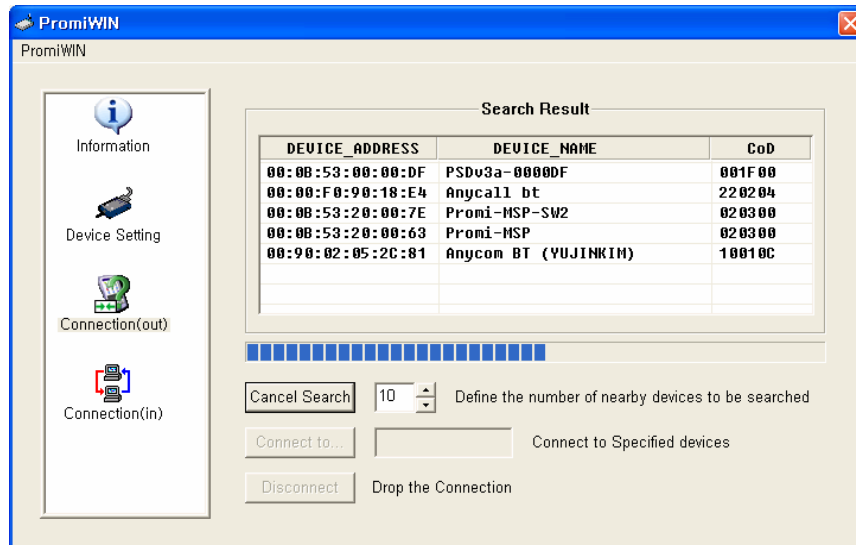


<Fig. 1.5>

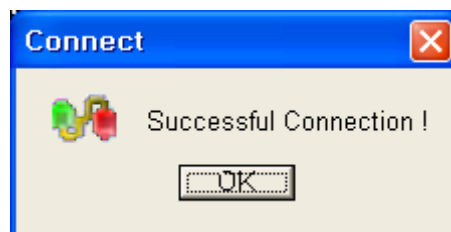
- 1-9. **SD01** now became 'Discoverable/Connectable' so it can receive Bluetooth connection from **SD02**. **The STATUS LED of SD01 will blink green, twice every 3 seconds.**
- 1-10. Detach **SD01** from your computer, making sure its status LED is blinking green.
- 1-11. Close Promi-WIN™.

### 2.1.2 **Let's make SD02 to search SD01 and connect to.**

- 2-1. Attach **SD02** to your PC, and start Promi-WIN™.
- 2-2. Select the number of the Serial port where **SD02**.
- 2-3. Users need to select exactly same Baud/Parity/StopBit as the setting of attached **SD02**. 9600/No/OneStopBit is default setting of all of Promi-SDs.
- 2-4. Press OK button.
- 2-5. Select the '**Connection(out)**' icon in the list control box and click the SEARCH button.



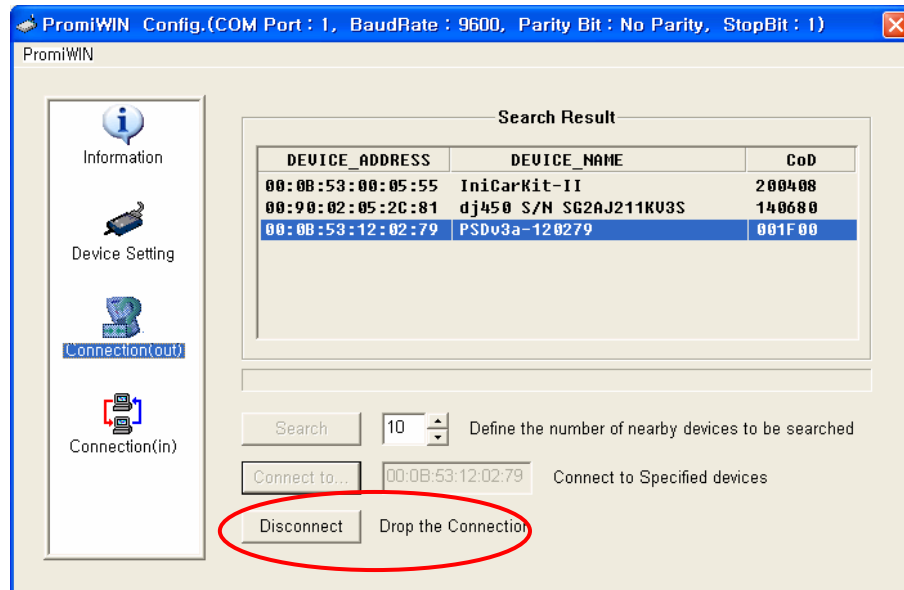
- 2-6. Search **SD01** from the searched list. Device Address of **SD01** can be found on the back side of **SD01**. If you find **SD01**, press Cancel button to finish searching. Make sure that Status LED of **SD01** is still blinking in Green color.
- 2-7. Please select **SD01** from the searched list, then press CONNECT TO button.
- 2-8. You will get Successful Connection message.



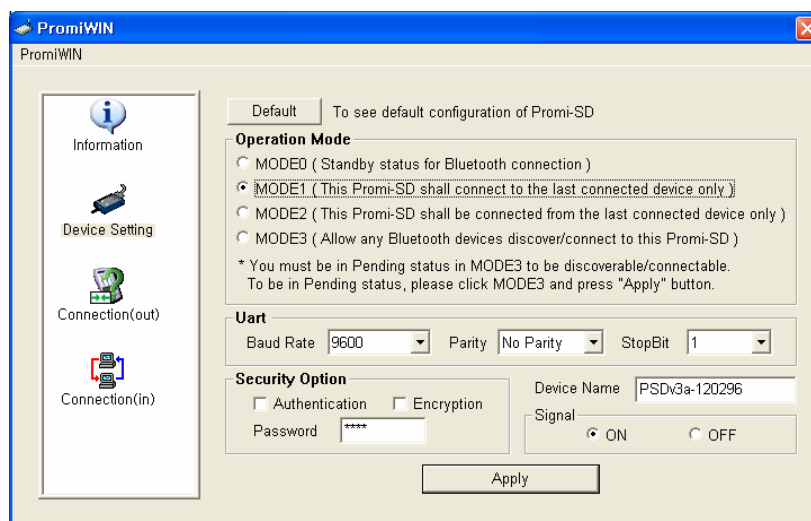
- 2-9. **Now, Status LEDs on Both SD01 and SD02 are Green**, which means they are connected.
- 2-10. Do not detach **SD02** from your computer yet, we will go to next stage for Auto-connection (Always-connection).

### 2.1.3 Let's make Auto-Connection between SD01 and SD02.

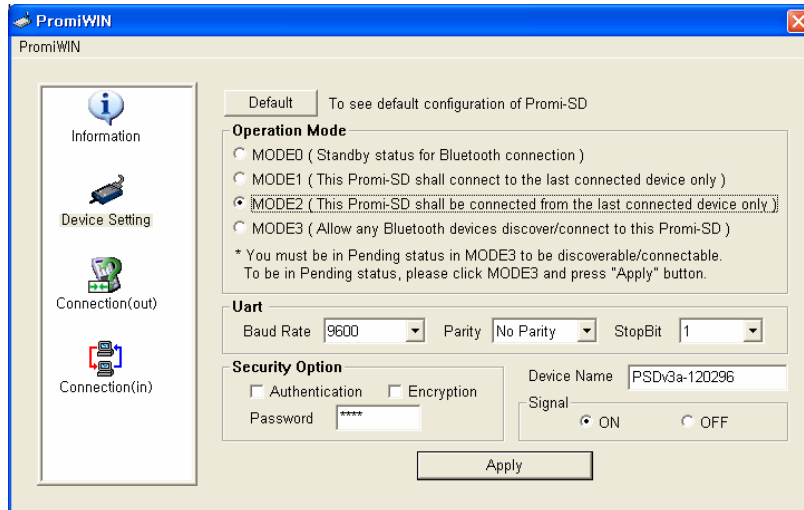
- 3-1. With SD02 which is still attached to your computer, in **Connection(out)** page, press DISCONNECT button at the bottom to release the connection for a while. SD02 remembers who was the last-connected device, even after Disconnected.



- 3-2. Now, **Status LEDs of SD02 becomes 'Orange'**, as well as SD01, as they are disconnected.
- 3-3. Select Device Setting icon in the list control box, and select **MODE1** in Operation Mode and apply.



- 3-4. **Now jobs for SD02 are finished. Detach SD02 from your computer.**
- 3-5. **Attach SD01 to your computer.**
- 3-6. Restart Promi-WIN™.
- 3-7. Select Device Setting icon in the list control box, and select **MODE2** in Operation Mode and apply.



- 3-8. Now, detach **SD01** from your computer.
- 3-9. Make sure that power to Both **SD01** and **SD02** are supplied.

With two of the **SD01** and **SD02**, turn off both using Switch on the side of its body. Then, turn on again Both **SD01** and **SD02** almost at the same time.

**Now, you will see Green Status LEDs on both units.**

**SD01** and **SD02** will be connected automatically, whenever, if configuration is not changed.

## 2.2. Using a Terminal Program

---

Promi-SD™ units are easily controlled and configured via PromiWIN™. Likewise functions are accomplished via any terminal program such as HyperTerminal. AT command sets supported by Promi-SD™ add sophistication to Promi-SD™ control.

### 2.2.1 Connecting Promi-SD™ to host.

For SD use, follow the simple instructions below:

1. Connect an SD to a host serial port. Then, turn on the SD.
2. Check the STATUS LED color. Amber indicates standard mode.
3. Execute any terminal program and activate Local Echo.
4. Configure the host serial port to match the SD unit configuration. The SD default configuration is 9600 bps Baud, 8 Data bit, No Parity, 1 Stop bit and H/W flow control.
5. Enter 'AT' command at the prompt. An SD 'OK' reply indicates proper operation.

### 2.2.2 Making the first Promi-SD™/Bluetooth connection

As stated before, Bluetooth wireless connections can be made with any other Bluetooth device supporting Bluetooth SPP (Serial Port Profile). For Bluetooth wireless connections to an SD, first make another SD '*Discoverable*' and '*Connectable*'. In this case, refer to section 3.3 before following the instructions below.

1. First check the status of the SD by entering 'AT+BTINFO?'. The SD response is comprised of BD\_ADDR, Device Name, Operating Mode, Operating Status, Authentication and Encryption flags. To make connection to other Bluetooth devices, the operating status of the first SD should be

'STANDBY'. A 'PENDING' operating status of the first SD indicates the unit is busy with another operation. In this case, cancel the ongoing operation by entering the 'AT+BTCANCEL' command.

```
AT+BTINFO?  
000B530000A9,PSDv2g-0000A9,MODE0,STANDBY,0,0  
  
OK
```

2. Search other local Bluetooth devices by entering the 'AT+BTINQ?' command.

```
AT+BTINQ?  
000B53000080,PSDv2g-000080,001F00  
  
0004B300E205,AP2002:1 #0,020300  
  
OK
```

3. Check the search list. Enter 'ATD' command in the BD\_ADDR of any Bluetooth device for connection. During the connection process, the STATUS LED will flash green every second.
4. Connection is indicated by the SD returning a 'CONNECT' message and displaying a green STATUS LED.

```
ATD000B53000080  
OK  
  
CONNECT
```

### 2.2.3 Making Promi-SD™ do INQUIRY SCAN and PAGE SCAN

Unlike many Bluetooth serial dongles, the SD has an internal, rechargeable

battery. As stated before, to maximize battery life, the SD INQUIRY SCAN and PAGE SCAN is set to disabled in manufacture. Therefore, to make the SD “Discoverable” (INQUIRY SCAN) and “Connectable” (PAGE SCAN), these operations must be manually activated.

1. Check the SD status by entering a ‘AT+BTINFO?’ command.

```
AT+BTINFO?  
000B530000A9,PSDv2g-0000A9,MODE0,STANDBY,0,0  
  
OK
```

2. Enter the ‘AT+BTSCAN’ command. The SD will start INQUIRY SCAN and PAGE SCAN operation. During the process, the SD will flash twice every 3 seconds until it is connected to another Bluetooth device.

```
AT+BTSCAN  
  
OK
```

3. Try Bluetooth connection to the SD from the other Bluetooth device. Once connected the first SD will return the ‘CONNECT’ message and the STATUS LED will display a continuous green without flashing.

```
AT+BTSCAN  
  
OK  
  
CONNECT
```

## 2.2.4 Releasing the existing Bluetooth connection

Once connected successfully, the SD becomes transparent to any serial applications on hosts. Data may be transferred within the radio range of the

SD. According to SD terminology, this operating status is called 'ONLINE STATUS'. In ONLINE STATUS, all AT commands are treated as characters and are ignored by the command interpreter of the SD. Therefore to escape from ONLINE STATUS enter escape string '+++'.

1. Transition from ONLINE STATUS to STANDBY STATUS by entering '+++' string to the SD. Check the current SD status by entering the 'AT+BTINFO?' command. The SD status should display CONNECT STATUS.

```
+++  
OK  
AT+BTINFO?  
000B530000A9,PSDv2g-0000A9,MODE0,CONNECT,0,0  
  
OK
```

2. Release the current Bluetooth connection by entering 'ATH' command. Once disconnected successfully, the SD returns the 'DISCONNECT' message.

```
ATH  
OK  
  
DISCONNECT
```

### 2.2.5 Automatic connection of two Promi-SD™ Units

Two SD units connect automatically when powered up. For automatic SD connection first make a Bluetooth connection between two SD units. Once



connected, the SD stores the 48-bit BD\_ADDR of its counterpart. To expedite 48-bit BD\_ADDR input operation, the SD is designed to store the BD\_ADDR of its latest counterpart.

1. Set one SD to do INQUIRY SCAN and PAGE SCAN operation as directed in section 3.3.
2. Set the other SD to connect to the SD in the previous step.
3. Once connected successfully, both SD units store the BD\_ADDR of their counterpart in their internal Flash. When desired, release the connection as directed in section 3.4.
4. Set the operating mode of one SD to MODE 1 by entering an 'AT+ BTMODE' command as shown below.

```
AT+BTMODE,1  
OK
```

5. Set the operating mode of the other SD to MODE 2 by entering an 'AT+BTMODE' command as show below.

```
AT+BTCANCEL  
OK  
AT+BTMODE,2  
OK
```

6. Turn both SD units power off. The SD pair will connect automatically when they are powered up again.
7. To release this paring, set them to MODE 0 by entering 'AT+BTMODE, 0'. or reset the units by pressing the RESET button.

```
AT+BTMODE,0  
OK
```

## 2.2.6 AT command vs. Operational Status

The AT command sets listed above can be executed per Promi-SD™ operational status. The following table shows the operational status and executable AT command sets.

| AT Command                 | Standby             | Pending | Online |
|----------------------------|---------------------|---------|--------|
| AT<cr>                     | √                   | √       |        |
| ATZ<cr>                    | √                   | √       |        |
| AT+BTINQ?<cr>              | √ <sup>(1)</sup>    |         |        |
| ATD112233445566<cr>        | √ <sup>(1)</sup>    |         |        |
| ATD<cr>                    | √ <sup>(1)</sup>    |         |        |
| AT+BTSCAN,n<cr>            | √ <sup>(1)</sup>    |         |        |
| AT+BTSCAN,112233445566<cr> | √ <sup>(1)</sup>    |         |        |
| AT+BTCANCEL<cr>            |                     | √       |        |
| +++                        |                     |         | √      |
| ATO<cr>                    | √ <sup>(2)</sup>    |         |        |
| ATH<cr>                    | √ <sup>(2)</sup>    |         |        |
| AT+BTAUTH,Auth,Encr<cr>    | √ <sup>(3)</sup>    |         |        |
| AT+BTMODE,n<cr>            | √ <sup>(3) 4)</sup> |         |        |
| AT+BTNAME="Name"<cr>       | √ <sup>(3)</sup>    |         |        |
| AT+BTKEY="nnnn"<cr>        | √ <sup>(3)</sup>    |         |        |
| ATS10=0 or ATS10=1         |                     |         |        |
| AT+BTINFO?<cr>             | √                   | √       |        |
| AT+UARTCONFIG,b,p,s<cr>    | √ <sup>(3) 4)</sup> |         |        |

- 1) Effective when Promi-SD™ is not in connection with Bluetooth.
- 2) Effective when Promi-SD™ is in connection status with Bluetooth.
- 3) Recommend to be used when Promi-SD™ is not in connections status with Bluetooth
- 4) To apply new values to Promi-SD™, software reset requires by ATZ command or restart Promi-SD™.

**\*NOTE: Full AT commands set can be found in Appendix B.**

# 3. Technical Specifications

## 3.1 Default Serial Settings

---

- 9600 Baud, 8 data bits, no parity, 1 stop bit, hardware flow control

## 3.2 Power Consumption

| Condition                                 | Current Consumption |               | Battery Life                           |
|---|---------------------|---------------|--|
|   | (Promi-SD101)       | (Promi-SD202) | 180mA Li-Poly Battery<br>(Promi-SD101) |
| If NOT connected to Host                  | 3.5 mA              | 19 mA         | 49 hrs 30 min.                         |
| If connected to Host                      | 13.5 mA             | 24 mA         | 13 hrs 10 min                          |
| For data communications<br>with Host only | 26.5 mA             | 27 mA         | 6 hrs 50 min                           |
| During INQUIRY mode                       | 62 mA               | 96 mA         | 3 hrs 20 min                           |
| For Master connection                     | 63 mA               | 96 mA         | 3 hrs 10 min                           |
| During SCAN (page &<br>inquiry) mode      | 27 mA               | 25 mA         | 6 hrs 30 min.                          |
| Park mode                                 | 13.8 mA             | 34 mA         | 12 hrs 40 min                          |
| Non-Park mode                             | 17.8 mA             | 40 mA         | 10 hrs                                 |

### 3.3 Environmental

---

**Model No.: Promi-SD101**

Recommended operating conditions: -10°C~70°C

Humidity: 90% Non-condensing

**Model No.: Promi-SD202**

Recommended operating conditions: -20°C~70°C

Humidity: 90% Non-condensing

### 3.4 Serial Interface

---

**Model No.: Promi-SD101**

RS232, Female DSUB-9, 1200~115200 baud,

CTS/RTS flow control or no flow control

**Model No.: Promi-SD202**

RS232, Female DSUB-9, 1200~230400 baud,

Automatic Detection Feature of Hardware flow control

DTR/DSR for loop-back & communications

CDC to check Bluetooth connection

### 3.5 Maximum distance between Promi-SD™s

---

In open space, maximum distances between two Promi-SD units were tested using different types of Optional Antennas. Users may extend wireless link distance up to 1.2Km via Promi-SD202 with Patch Antennas for both sides.

| Model no.   | Antennas for two Promi-SD units   | Max. Distance |
|-------------|-----------------------------------|---------------|
| Promi-SD101 | Default Antenna - Default Antenna | 30 meters     |
|             | Default Antenna - Dipole Antenna  | 50 meters     |
|             | Dipole Antenna - Dipole Antenna   | 80 meters     |
|             | Patch Antenna - Dipole Antenna    | 150 meters    |
|             | Patch Antenna - Patch Antenna     | 300 meters    |
| Promi-SD202 | Default Antenna - Default Antenna | 120 meters    |
|             | Default Antenna - Dipole Antenna  | 150 meters    |
|             | Dipole Antenna - Dipole Antenna   | 200 meters    |
|             | Patch Antenna - Dipole Antenna    | 400 meters    |
|             | Patch Antenna - Patch Antenna     | 1,200 meters  |

For information on optional Antennas, refer to Chapter 5 Optional Antennas.

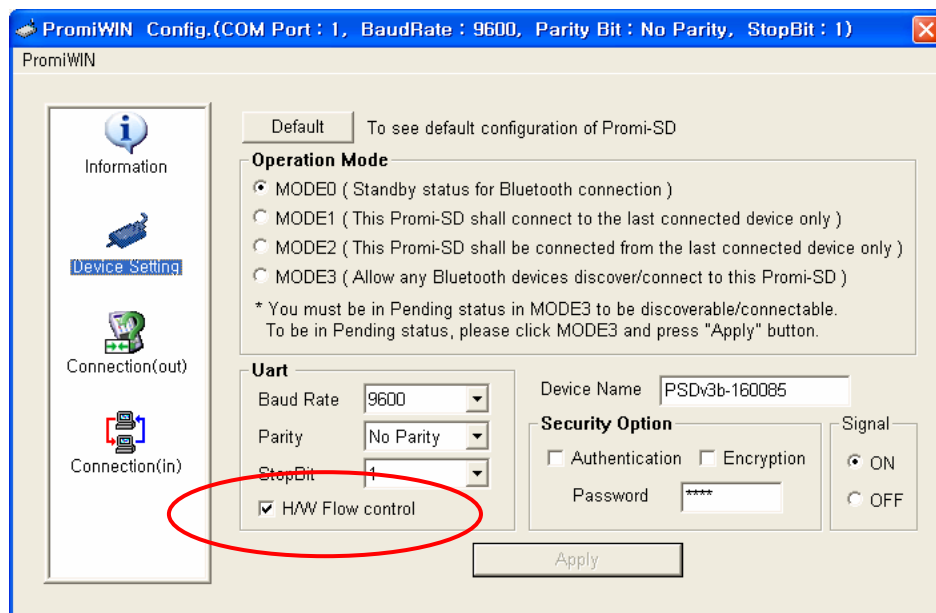
# 4. Troubleshooting

## 4.1 ON/OFF of Hardware Flow control

Promi-SD101 of version v2g & v2h are designed to use CTS/RTS for handshaking. For equipment which is not using Hardware flow control for serial communications, Promi-SD101's firmware should be set to turn OFF hardware flow control (CTS/RTS). Customers may indicate preferences when ordering or turn off the handshaking by bridging CTS and RTS (no. 7 and no. 8 lines) using a Gender changer.

Version v3a has automatic detection feature of hardware flow control, but in certain environment such as with PC, this function may not operate well.

**\*Starting from Promi-SD version v3b, customers may choose the usage of hardware flow control using PromiWIN software.**



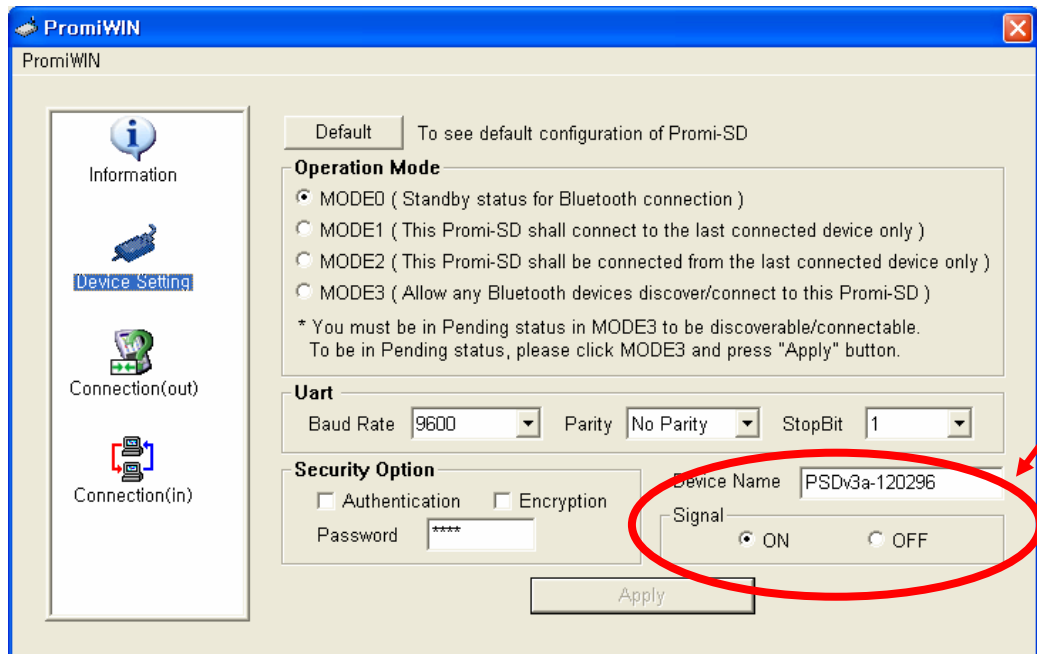
If checked, Promi-SD will use hardware flow control. If you do not want to use the function, please uncheck and press Apply button.

## 4.2 Enabling/Disabling of Response Signals -OK, CONNECT, DISCONNECT & ERROR

Promi-SD™ will respond to users on the current status, success & failure of connections, and error mode. Both PromiWIN™ and Terminal Programs will receive related response signals from Promi-SD™.

In some cases, various equipment may regard these four response signals incorrectly and react inappropriately. To avoid these possible errors, users may disable the response signals via PromiWIN™ or AT commands at Terminal.

- 1) By Promi-WIN™, check OFF at Signal pane at Device Setting panel to disable 4 response signals from Promi-SD™.



- 2) By AT commands at your Terminal program.

ATS10=1 : Enabling/ON 4 signals

ATS10=0 : Disabling/OFF 4 signals

ATS10? : To see current status

### 4.3 For DCE connection

---

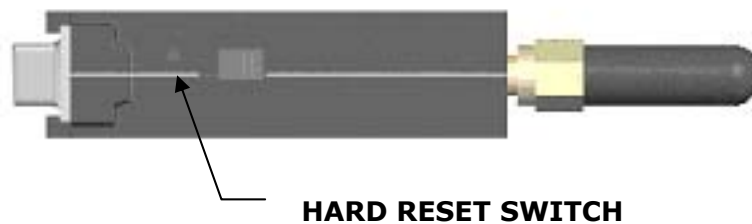
Promi-SD™ is twisted Rx/Tx-ready for direct DTE connection. For connection to DCE equipment such as modem etc., customers need to use a gender changer which twisted Tx/Rx, CTS/RTS, DTR/DSR for right operation.

For more information, please contact [support@initium.co.kr](mailto:support@initium.co.kr)

### 4.4 Hardware Reset

---

For Hardware reset, press the button on the right side of the Promi-SD™ unit with a narrow tool such as a ball-point pen.



### 4.5 How to get Bluetooth CF cards connected to Promi-SD

---

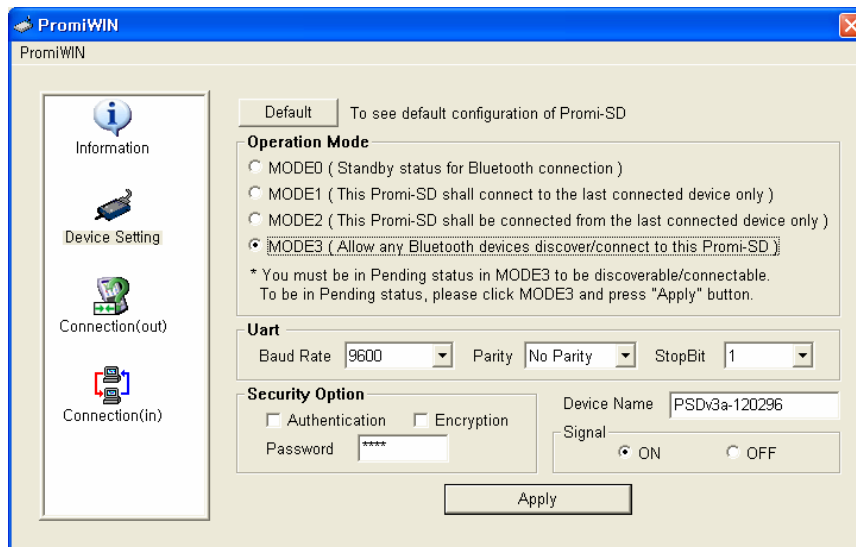
If you are using Bluetooth CF cards or USB adaptors from other manufacturers, please use PromiWIN™ software of latest version, which will be more familiar to consumers.

PromiWIN™ can be downloaded from our website at:

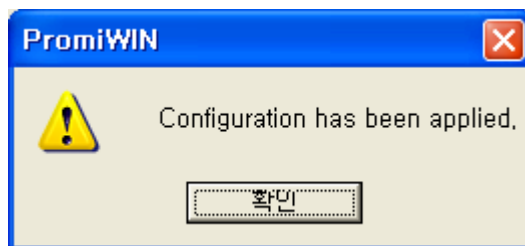
<http://www.initium.co.kr/english/download.html>

- 1) In PromiWIN version3, start and go to the Device Setting menu.
- 2) Select **MODE3** to allow any Bluetooth device can discover and connect to this Promi-SD.

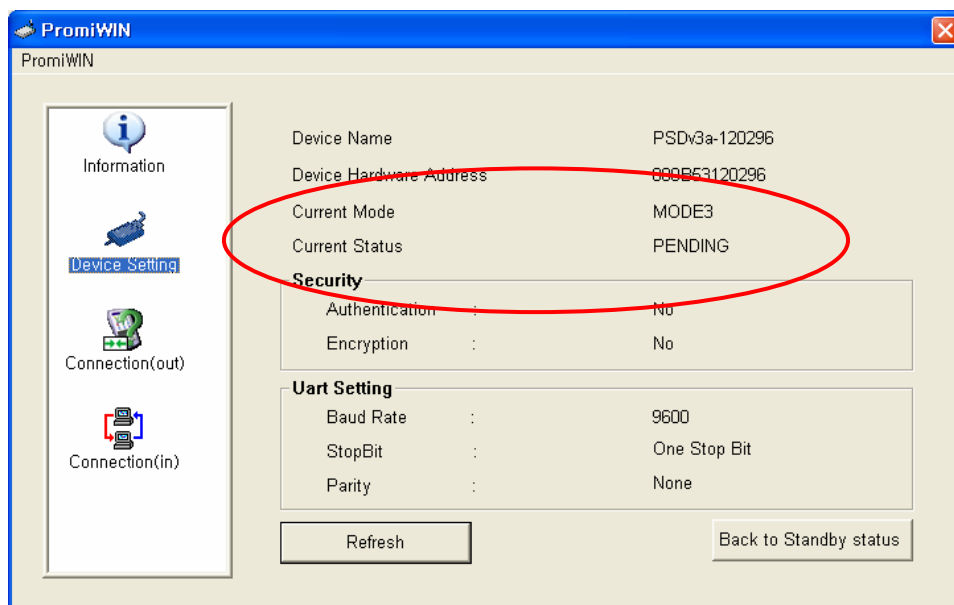




- 3) Press "Apply" button.
- 4) You will get Configuration has been applied message.



- 5) If you confirm, the page will show the current device **information** as in below.



- 6) Please CONFIRM that now the Promi-SD is in **MODE3 and PENDING status** as in Red circle above. If the Promi-SD is in STANBY status, connection WILL NOT

be made.

- 7) At this stage, Promi-SD™ is DISCOVERABLE & CONNECTABLE MODE  
[Get your Bluetooth CF cards or USB adaptors connected to this Promi-SD™ now.](#) Then you finish to connect your Bluetooth devices to Promi-SD. Open you COM port of Serial Communication program to verify communication status.

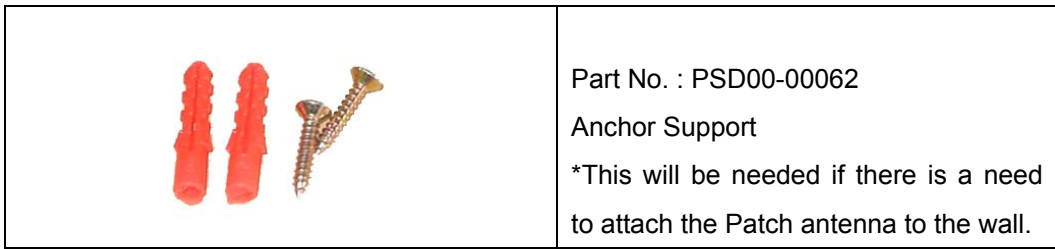
## 5. Optional Antennas

### (1) Dipole Antenna

|   |   |
|---|---|
|  | <p>Part No.: PSD00-00050<br/>2dBi<br/>Connector: SMA<br/>Size: 10cm</p> |
|---|---|

### (2) Patch Antenna (w/ RF extension cable & wall-attachable nails)

|   |   |
|---|---|
|  | <p>Part No.: PSD00-00060<br/>8.5dBi<br/>Including a 30cm RF extension cable</p> <p>Longer RF extension cable</p> <p>Part No.: PSD00-00061: 1m length<br/>For 3m and longer length, please ask it to our <a href="mailto:support@initium.co.kr">support@initium.co.kr</a></p> <p>SMA connector</p> |
|---|---|



\*Distance Data between Promi-SD™s when Optional Antennas are used:

| Model no.   | Antennas for two Promi-SD units   | Max. Distance |
|-------------|-----------------------------------|---------------|
| Promi-SD101 | Default Antenna - Default Antenna | 30 meters     |
|             | Default Antenna - Dipole Antenna  | 50 meters     |
|             | Dipole Antenna - Dipole Antenna   | 80 meters     |
|             | Patch Antenna - Dipole Antenna    | 150 meters    |
|             | Patch Antenna - Patch Antenna     | 300 meters    |
| Promi-SD202 | Default Antenna - Default Antenna | 120 meters    |
|             | Default Antenna - Dipole Antenna  | 150 meters    |
|             | Dipole Antenna - Dipole Antenna   | 200 meters    |
|             | Patch Antenna - Dipole Antenna    | 400 meters    |
|             | Patch Antenna - Patch Antenna     | 1,200 meters  |

## 6. For Multi-Serial Connections

### 6.1 Promi-MSP™

---

For multiple serial connections, we recommend Promi-MSP™. Promi-MSP™ has 7 default Bluetooth connections and can be expanded to up to 14 connections.

More information on Promi-MSP™ can be found in its User Manual at [www.initium.co.kr](http://www.initium.co.kr)



<Fig. 7.1.1 Promi-MSP™>

## 7. Legal Notice

### About this Document

This document provides introductory instructions on how to set up and manage Promi-SD™ within your networking environment. Should you require more information, please refer to Initium website at <http://www.initium.co.kr>.

### Trademark Acknowledgements

The Bluetooth trademarks are owned by their proprietor and used by Initium Co., Ltd. under license. Promi™ is a registered trademark of INITIUM.

### Copyright Information

The unauthorized copying of materials that are covered by copyright and other international proprietary or intellectual property rights is prohibited in most countries. Initium Co., Ltd. recommends that the users of this equipment seek the necessary authorizations for copying material. The instructions for use in the manual shall not be considered as an inducement to make illicit duplications of material. Any duplication will be made at user's own risk.

### Maintenance and Support

Every care has been taken in the preparation of this manual; if you detect any inaccuracies or omissions, please inform us by contacting Intium's technical support. Initium Co., Ltd. cannot be held responsible for any technical or typographical errors and reserves the right to make changes to the product and manuals without any prior notice.

### Limited Warranty

Promi-SD™

Initium Co., Ltd. warrants the original owner that the products delivered will be free from defects in material and workmanship for 90 days following the date of purchase. This warranty dose not cover any damage attributable to erroneous installation of the product.

INITIUM'S TOTAL LIABILITY IS LIMITED TO THE PRICE/LICENSE FEE ACTUALLY

PAID BY PURCHASER TO INITIUM FOR THE PRODUCT WITH RESPECT TO WHICH LOSSES OR DAMAGES ARE CLAIMED.

IN NO EVENT SHALL INITIUM OR ITS LICENSOR AND SUPPLIERS BE LIABLE FOR ANY INDIRECT, INCIDENTAL OR CONSEQUENTIAL LOSSES OR DAMAGES OF ANY NATURE WHATSOEVER, INCLUDING, BUT NOT LIMITED TO, LOSS OF DATA OR DATA BEING RENDERED INACCURATE, LOSSES SUSTAINED BY YOU OR THIRD PARTIES SUCH AS LOSS OF BUSINESS, LOSS OF PROFITS, BUSINESS INTERRUPTION OR PERSONAL INJURY, EVEN IF INITIUM OR ITS LICENSORS OR SUPPLIERS HAS BEEN ADVISED OF THE POSSIBILITY OF SUCH DAMAGES.

This warranty does not cover replacement of products damaged by abuse, accident, misuse, neglect, alteration, repair, disaster, improper installation or improper testing.

## 9. About this Manual

This manual is available in a printable PDF version on-line and on the CD enclosed in the Promi-SD™ product package.

For additional support related to Promi-SD™ and this document, contact INITIUM via:

---

**INITIUM Co., Ltd.**

**#716, Kumgang-Hitech Valley, 133 Sangdaewon, Jungwon, Sungnam,  
Kyunggi, 462-120, Korea**

**Tel.: +82-31-777-5703**

**Fax: +82-31-777-5704**

**OR**

[www.initium.co.kr](http://www.initium.co.kr)

**OR**

**Email: [info@initium.co.kr](mailto:info@initium.co.kr)**

---



# **Appendix A: Power Adaptor Specification**

**Manufacturer: Anam Instruments Inc.**

**Emerald B/D 7F, 1042, Hogeong-dong, Dongan-gu, Anyang, Korea**

**Tel.: +82-31-347-6140**

**Fax: +82-31-347-7019**

**[www.anamic.co.kr](http://www.anamic.co.kr)**

## **Manufacturer's Model Name: AP1015**

### 1. STANDARD FEATURES

- 1.1. 10WATT AC/DC SWITCHING MODE ADAPTOR
- 1.2. WALL MOUNT DESIGN
- 1.3. 100~240Vac UNIVERSAL VOLTAGE INPUT
- 1.4. 5V 2A REGULATED OUTPUT
- 1.5. SHORT CIRCUIT PROTECTION
- 1.6. DESIGN TO MEET CLASS B LIMIT OF EN55022 AND FCC PART 15
- 1.7. VACUUM IMPREGNATED TRANSFORMER
- 1.8. 100% BURN-IN PROCESS

### 2. ELECTRICAL CHARACTERISTICS

#### 2.1 INPUT CHARACTERISTICS

##### 2.1.1. AC INPUT VOLTAGE

- 2.1.1.1. Nominal input voltage : 110 / 220 Vac
- 2.1.1.2. Rated input voltage range : 100 to 240 Vac
- 2.1.1.3. Operating input voltage range : 90 to 264 Vac

##### 2.1.2. AC INPUT FREQUENCY

- 2.1.2.1. Nominal input frequency : 50 / 60 Hz
- 2.1.2.2. Rated input frequency : 47 - 63 Hz

##### 2.1.3. AC INPUT CURRENT : MAX 0.3 A (RMS) at 90 Vac

#### 2.2 OUTPUT CHARACTERISTICS

##### 2.2.1. DC OUTPUT

| OUTPUT VOLTAGE | LOAD  |     |      | OUTPUT RANGE  | OUTPUT RIPPLE |
|----------------|-------|-----|------|---------------|---------------|
|                | MIN   | MAX | PEAK |               |               |
| 5 VDC          | 0.2 A | 2 A | -    | 4.75 ~ 5.25 V | 50 mVpp       |

2.2.1.1. Specified output regulation limit includes line regulation and load regulation.

2.2.1.2. Continuous output shall not exceed 10 W.

2.2.1.3. Ripple and noise is measured at the end of output connector with 20MHz oscilloscope bandwidth.

2.2.1.4. A 22uF Electrolytic capacitor and a 0.22uF Ceramic capacitor should be connected in parallel with output load..

2.2.2. EFFICINCY : Minimum 70 % at 2A load condition.

2.2.3. SHORT CIRCUIT PROTECTION : CYCLING

2.2.4. NO LOAD OPERATION : NO DAMAGE

2.2.5. DI-ELECTRIC WITHSTANDING VOLTAGE

2.2.5.1. Primary to Secondary : 3 KV, 1 Second

2.2.5.2. Cut-Off Current : 10mA

2.2.6. EMI

2.2.6.1. Shall be designed to meet CLASS B Limit of FCC part 15.

2.2.6.2. Shall be designed to meet EN 55022

2.2.7. SAFETY

2.2.7.1. UL & cUL : UL1950

2.2.7.2. TUV - CE : EN60950

2.2.7.3. ek-mark : K60950

2.2.7.4. CB / QAS / CCIB / PSE

### 2.3. GENERAL CHARACTERISTICS

2.3.1. OPERATING TEMPERATURE RANGE : 0°C to 35°C at 100% Load condition.  
0°C to 40°C at 90% Load condition.

2.3.2. OPERATING HUMIDITY : 15 to 80% RELATIVE HUMIDITY

2.3.3. STORAGE TEMPERATURE : -20°C to 85°C

2.3.4. STORAGE HUMIDITY : 90 % RELATIVE

2.3.5. BURN-IN PROCESS

2.3.5.1. All unit shall be subjected to burn-in process of mass production.

2.3.5.2. TEMPERATURE : 30 +/-5°C

2.3.5.3. LOAD CONDITION : 2 A

2.3.5.4. INPUT VOLTAGE : 110 / 220 Vac

### 3. MECHANICAL CHARACTERISTICS

#### 3.1. DIMENSIONAL SIZE

LENGTH : 66 mm

WIDTH : 48.5 mm

HIGHT : 35 mm

#### 3.2. OUTPUT CABLE

CABLE LENGTH : 1850 +/- 50

## Appendix B: AT command sets

---

The following AT command sets are supported by Promi™-SD. Here <cr> represents carriage return of ASCII Code (0x0D) and <lf> represents line feed of ASCII Code (0x0A).

### **AT<cr>**

*Function :* Check the presence of your SD.

*Response :* <cr><lf>OK<cr><lf> or  
<cr><lf>ERROR<cr><lf>

*Description :* In standard mode, you can check whether your SD is connected to a host correctly by using this AT command.

### **ATZ<cr>**

*Function :* Do soft-reset

*Response :* <cr><lf>OK<cr><lf> or  
<cr><lf>ERROR<cr><lf>

*Description :* You can do soft-reset by using this AT command. When your SD is already connected to the other device, it disconnects the connected device. You can halt the current ongoing operation by using this command.

### **AT&F<cr>**

*Function :* Restore the default configuration of your SD.

*Response :* <cr><lf>OK<cr><lf> or  
<cr><lf>ERROR<cr><lf>

*Description :* You can restore the default configuration of your SD by executing this AT command.

### **AT+BTINQ?<cr>**

*Function :* Search (INQUIRY) other Bluetooth devices nearby.

*Response :* <cr><lf>BD\_ADDR, Device Name , Class of Device<cr><lf>  
<cr><lf>BD\_ADDR, Device Name , Class of Device<cr><lf>  
...  
<cr><lf>BD\_ADDR, Device Name , Class of Device<cr><lf>  
<cr><lf>OK<cr><lf>

*Description :* This command is used to inquiry other Bluetooth devices nearby. The INQUIRY process is carried out during the predefined time duration (30

seconds). The maximum number of INQUIRY result is 10.

#### **ATD BD\_ADDR <cr>**

*Function :* Make connection with the given BD\_ADDR.

*Response :* <cr><lf>OK<cr><lf>  
<cr><lf>CONNECT<cr><lf>  
or  
<cr><lf>OK<cr><lf>  
<cr><lf>ERROR<cr><lf>.

*Description :* After getting BD\_ADDRs, you can make connection to other Bluetooth device by using this AT command. Once you input this command, SD tries to connect the Bluetooth device with the given BD\_ADDR for 5 minutes. The connection failure happens when a Bluetooth device with the given BD\_ADDR is not in PAGE SCAN mode or is already connected to other Bluetooth device.

#### **ATD<cr>**

*Function :* Make connection with a Bluetooth device connected most recently.

*Response :* <cr><lf>OK<cr><lf>  
<cr><lf>CONNECT<cr><lf>  
or  
<cr><lf>OK<cr><lf>  
<cr><lf>ERROR<cr><lf>.

*Description :* If you execute this AT command, your SD make connection with a Bluetooth device which your SD connect most recently. To make this AT command work successfully, there should be at least one successful connection to the other Bluetooth you want to connect.

#### **AT+BTSCAN <cr>**

*Function :* Make your SD do INQUIRY SCAN and PAGE SCAN alternately.

*Response :* <cr><lf>OK<cr><lf>  
<cr><lf>CONNECT<cr><lf>

*Description :* You can force your SD to do INQUIRY SCAN or PAGE SCAN alternately with this AT command. Your SD does INQUIRY SCAN and PAGE SCAN until it has a connection from other Bluetooth device. Once connected, your SD returns 'CONNECT' message. You can use 'AT+BTCANCEL' to cancel this operation. This AT command has the same effect of 'AT+BTSCAN,3,0'.

### **AT+BTSCAN, n, to<cr>**

*Function :* You can force your SD to do INQUIRY SCAN or PAGE SCAN.

*Response :* <cr><lf>OK<cr><lf>  
<cr><lf>CONNECT<cr><lf>  
or  
<cr><lf>OK<cr><lf>  
<cr><lf>ERROR<cr><lf>

*Description :* To make SD to be *Discoverable* and *Connectable* from other Bluetooth devices, you should set its INQUIRY SCAN and PAGE SCAN. To make your SD do INQUIRY SCAN only, you should set n as 1. To make your SD do PAGE SCAN only, you should set n as 2. When n is set to 3, your SD does INQUIRY SCAN and PAGE SCAN alternately. Here, 'to' indicates the time out interval of INQUIRY SCAN and PAGE SCAN operations. If you set 'to' to '0', your SD does INQUIRY SCAN and PAGE SCAN until it has a connection from other Bluetooth device. Your SD returns 'CONNECT' message when it is connected from other Bluetooth device within the given time out intervals. Otherwise, it returns 'ERROR' message.

### **AT+BTSCAN, BD\_ADDR, to<cr>**

*Function :* Wait Bluetooth connection from a device with given BD\_ADDR.

*Response :* <cr><lf>OK<cr><lf>  
<cr><lf>CONNECT<cr><lf>  
or  
<cr><lf>OK<cr><lf>  
<cr><lf>ERROR<cr><lf>

*Description :* Once you enter this AT command, your SD does PAGE SCAN. However, it waits a connection from a Bluetooth device with the given BD\_ADDR. This process lasts during 'to' time interval. Especially when 'to' has value of '0', your SD waits connection infinitely.

### **AT+BTCANCEL<cr>**

*Function :* Cancel currently ongoing operation of your SD.

*Response :* <cr><lf>OK <cr><lf>

*Description :* This AT command works only when your SD is busy in doing 'AT+BTSCAN', 'ATD' or 'AT+BTINQ?'. Once canceled successfully, your SD will become

STANBY STATUS’.

**+++**

*Function :* Make transition from ONLINE STATUS to STANDBY STATUS.

*Response :* <cr><lf>OK <cr><lf>.

*Description :* If you input ‘+++’ string to your SD in ONLINE STATUS, your SD goes into STANBY STATUS. Once SD enters into STANDBY STATUS, you can use any AT command sets supported by Promi™-SD.

**ATO<cr>**

*Function :* Make transition from STANBY STATUS to ONLINE STATUS.

*Response :* None

*Description :* This AT command is the counter operation of ‘+++’. You can change the operating status to ONLINE STATUS again by using this command. In ONLINE STATUS, the data can be transferred between two hosts. The existence of your SD becomes transparent to any host applications which use serial ports.

**ATH<cr>**

*Function :* Release the current Bluetooth connection.

*Response :* <cr><lf>OK<cr><lf>  
<cr><lf>DISCONNECT <cr><lf>.

*Description :* This AT command can be used for disconnecting the existing Bluetooth connection.

**AT+BTSEC, Authentication, Encryption <cr>**

*Function :* Set Bluetooth authentication or encryption features selectively.

*Response :* <cr><lf>OK<cr><lf>.

*Description :* By using this AT command, you can set authentication or encryption feature of your SD during Bluetooth connection process. Once you set authentication or encryption features, your SD stores its status. To release authentication or encryption features you set, you should use this AT commands or do soft-reset. To enable authentication or encryption, set authentication or encryption parameter as 1. Otherwise set either of them as 0.

#### **AT+BTLAST?<cr>**

*Function :* Return BD\_ADDR of the Bluetooth device to your host which your SD is connected most recently.

*Response :* <cr><lf>BD\_ADDR<cr><lf>  
<cr><lf>OK< cr><lf>

*Description :* You can use this AT command if you need to refer the BD\_ADDR of most recently connected Bluetooth device.

#### **AT+BTMODE, n<cr>**

*Function :* Set the operating mode of your SD.

*Response :* <cr><lf>OK<cr><lf>

*Description :* Your SD has 4 different operating mode. According to the current operating mode you set, your SD behavior differently.

n=0 : This means your SD is in MODE 0. MODE 0 is the default configuration.

n=1 : In MODE 1, your SD will try to make connection to most recently connected Bluetooth device.

n=2 : In MODE 2, your SD will wait connection from most recently connected Bluetooth device.

n=3 : IN MODE 3, your SD does INQUIRY SCAN and PAGE SCAN alternately.

#### **AT+BTNAME="FriendlyName"<cr>**

*Function :* Assign user friendly device name to your SD.

*Response :* <cr><lf>OK<cr><lf>

*Description :* You can assign your SD user friendly name by using this AT command. With the assigned name, you can distinguish your SD easily from other Bluetooth devices. Up to 32 characters are permitted as user friendly name.

#### **AT+BTKEY="nnnn"<cr>**

*Function :* Change the passkey.

*Response :* <cr><lf>OK<cr><lf>

*Description :* When the authentication is enabled in your SD, you should assign passkey. Two Bluetooth devices which are to be connected should have the same passkey. The default passkey of your SD is '1234'. You can assign maximum 16 alphanumeric characters as a passkey.



#### **AT+BTINFO?<cr>**

*Function :* Return the internal status of your SD.

*Response :* <cr><lf>BD\_ADDR,Name,Mode,Status,Auth,Encryp<cr><lf>  
<cr><lf>OK<cr><lf>

*Description :* When you enter this AT commands at a host terminal, your SD returns its device information and status to a host. It encompasses BD\_ADDR, user friendly name, operating mode, operating status and authentication/encryption status. Especially when the operating status is PENDING, it means your SD is busy in processing 'AT+BTINQ?', 'ATD' or 'AT\_BTSCAN'. When Authentication or Encryption feature is activated, the corresponding parameter has value of '1'.

#### **AT+BTLPM,n<cr>**

*Function :* Set Bluetooth Low power consumption mode.

*Response :* <cr><lf>OK<cr><lf>

*Description :* To minimize power consumption, your SD supports Bluetooth PARK mode. When you set n as 1, your SD uses PARK mode. Using PARK mode might cause extra data transmission delay in some cases.

#### **AT+BTSD?<cr>**

*Function :* Return the list of secured devices.

*Response :* <cr><lf>BD\_ADDR<cr><lf>  
<cr><lf>BD\_ADDR<cr><lf>  
...  
<cr><lf>BD\_ADDR<cr><lf>  
<cr><lf>OK<cr><lf>

*Description :* Your SD can pair up to 5 Bluetooth devices. Upon receiving this AT command, your SD returns all the BD\_ADDRs of the previously paired Bluetooth devices.

#### **AT+BTCSD<cr>**

*Function :* Delete the info of all the paired devices stored in your SD.

*Response :* <cr><lf>OK<cr><lf>

*Description :* This AT command just deletes the info of paired devices stored on SD's Flash memory. To delete the same info resides on SD's RAM, you have to do software reset or hardware reset.

### **AT+BTFP,n<cr>**

*Function :* Force your SD to generate passkey automatically.

*Response :* <cr><lf>OK<cr><lf>

*Description :* Once paired, your SD uses the stored link key. By using this AT command, you can make Bluetooth connection with a new link key. When n is set to 1, your SD newly generates a link key during connection process.

### **AT+UARTCONFIG, baudrate, parity, stopbit,handshaking<cr>**

*Function :* Configure the serial port of your SD.

*Response :* <cr><lf>OK<cr><lf>

*Description :* By using this AT command, you can reconfigure the serial port of your SD. You can set baudrate, parity, stopbit . To make this command result active, you should do soft-reset or turn off/on your SD. The following values are permitted for each parameter.

- Baudrate = 1200, 2400, 9600, 19200, 38400, 57600 or 115200.  
230400 (only for Promi-SD102/202/ESD)
- Parity = N (No parity), E (Even parity) or O (Odd parity).
- Stopbit = 1 or 2.
- Handshaking = 1 or 0  
(If '1', hardware handshaking will be used. If '0', handshaking function of Promi-SD will be turned off)

## **Full AT commands set**

| No. | Command             | Response  | Comments   |
|-----|---------------------|---|--|
| 1)  | AT<cr>              | <cr><lf>OK<cr><lf>  |  |
| 2)  | ATZ<cr>             | <cr><lf>OK<cr><lf>  | Drops all connections, disable Inquiry and Page scans. Reset the bluetooth module.   |
| 3)  | AT&F<cr>            | <cr><lf>OK<cr><lf>  | Reset to factory default state   |
| 4)  | AT+BTINQ?<cr>       | <cr><lf>1122334455,FriendlyName,CoD<cr><lf><br><cr><lf>1122334455,FriendlyName,CoD<cr><lf><br><cr><lf>1122334455,FriendlyName,CoD<cr><lf><br><cr><lf>OK<cr><lf> | Inquiry nearby devices. The OK at the end means end of inquiry.  |
| 5)  | ATD112233445566<cr> | <cr><lf>OK<cr><lf><br><cr><lf>CONNECT<cr><lf> or<br><cr><lf>ERROR<cr><lf>   | Connect to the specified device.<br>If you want to enable Authentication and Encryption, just set variable as 1.   |
| 6)  | ATD<cr>             | <cr><lf>OK<cr><lf><br><cr><lf>CONNECT<cr><lf> or<br><cr><lf>ERROR<cr><lf>   | Connect to the device that last successfully connected.  |
| 7)  | AT+BTSCAN<cr>       | <cr><lf>OK<cr><lf>  | Enable inquiry and page scans with timeout of infinity.  |
| 8)  | AT+BTSCAN,n,to<cr>  | <cr><lf>OK<cr><lf>  | Enable inquiry or Page scans.<br>If n=1, disable page and enable inquiry.<br>If n=2, enable page and disable inquiry.<br>If n=3, enable both page and inquiry.<br>Scan will be performed during <to> |

|     |  |  |   |
|-----|--|--|---|
|     |  |  | seconds.  |
| 9)  | AT+BTSCAN112233445566,to<cr>           | <cr><lf>OK<cr><lf>   | Will scan of only specified device.   |
| 10) | AT+BTCANCEL<cr>                        | <cr><lf>OK<cr><lf>   | cancel the current pending operation when the device is inquiring, paging or scanning mode.   |
| 11) | +++                                    | <cr><lf>OK<cr><lf>   | Drop from online mode to command mode.  |
| 12) | ATO<cr>                                | <cr><lf>OK<cr><lf>   | Return to online mode if currently being connected.   |
| 13) | ATH<cr>                                | <cr><lf>OK<cr><lf>   | Drop the connection.  |
| 14) | AT+BTSEC,Authentication,Encryption<cr> | <cr><lf>OK<cr><lf>   | Same as AT+BTAUTH   |
| 15) | AT+BTLAST?<cr>                         | <cr><lf>OK<cr><lf>   | Query the bd-address of last connected device   |
| 16) | AT+BTMODE,n<cr>                        | <cr><lf>OK<cr><lf>   | Sets the mode of device.<br>If n=0, device operates at Standart mode which accepts all AT commaned supported.<br>If n=1, device operates at Master mode which try to connect peer device.<br>If n=2, device operates at Slave mode which waiting for connection.<br>If n=3, device operates at always connectable mode. |
| 17) | AT+BTNAME="FriendlyName"<cr>           | <cr><lf>OK<cr><lf>   | Sets the friendly name of this unit.  |
| 18) | AT+BTKEY="nnnn"<cr>                    | <cr><lf>OK<cr><lf>   | Sets the Passkey of this unit.<br>Up to 16 characters.  |
| 19) | AT+BTINFO?<cr>                         | <cr><lf>112233445566,FriendlyName,Mode,State,Authent<br>ication,Encryption<<br>cr><lf><br><cr><lf>OK<cr><lf> | Retrieve local device information including BD address, Friendly name, mode of device, internal operation state and status of authentication and encryption features.   |

|     |   |  |  |
|-----|---|--|--|
| 20) | AT+BTLPM,n<cr>  | <cr><lf>OK<cr><lf>   | Enable or disable the low power mode of dongle.<br>n = 1 or 0  |
| 21) | AT&V<cr>  | <cr><lf>S0: m0;S1:<br>m1; ... Sn:<br>mn<cr><lf><br><cr><lf>OK<cr><lf>  | View all the values of internal S- registers   |
| 22) | AT+BTSD?<cr>  | <cr><lf>bdaddr of<br>secured device<br>1<cr><lf><br><cr><lf>bdaddr of<br>secured device<br>1<cr><lf><br><cr><lf>OK<cr><lf> | Query the bd-addresses of secured devices  |
| 23) | AT+BTCSD<cr>  | <cr><lf>OK<cr><lf>   | Clear the list of secured devices  |
| 24) | AT+BTFP,n<cr>   | <cr><lf>OK<cr><lf>   | Force paring when connecting as master   |
| 25) | AT+UARTCONFIG,baudrate,parity,stopbit,handshaking<cr> | <cr><lf>OK<cr><lf>   | Sets the configuration of UART interface. Possible values are;<br>baudrate<br>=1200,4800,9600,19200,38400,57600 or 115200.<br>parity = N(o parity), E(ven parity) or O(dd parity).<br>stop = 1 or 2.<br>Handshaking = 1 or 0<br>(If '1', hardware handshaking will be used. If '0', handshaking function of Promi-SD will be turned off) |
| 26) | AT+SETESC,nn<cr>                                      | <cr><lf>OK<cr><lf>   | Sets the escape sequence character. 'nn' should be ASCII code (Decimal), and printable character. Default escape charater is '+++'   |
| 27) | AT+PINQ?<cr>  | <cr><lf>OK<cr><lf>   | For Periodic Inquiry. Promi-SD will try to inquire nearby Bluetooth devices periodically and deliver the inquired  |

|     |      |  |  |
|-----|------|--|--|
|     |      |  | result to Host. To lease periodic inquiry function, AT+BTCANCEL. |
| 28) | AT&V |  | Shows S-register values  |

**S-register command: If you change the values of S-register, please reboot Promi-SD.**

ATSnn=mm<cr>: To change ATSnn register value

ATSnn?: To check current ATSnn register value.

|     |       |   |
|-----|-------|---|
| 29) | ATS3  | Stream UART policy (Default 0)<br>If set as '0', throughput is the priority, if set as '1', Latency is the priority.  |
| 30) | ATS4  | Enable Remote name query (default 1)<br>Get BDAaddress and device name during Inquiry.<br>If set as '0', only get BD address. Inquiry time can be faster.   |
| 31) | ATS10 | Default 1<br>ATS10=1<cr> :<br>Enabling all of the response messages- OK, CONNECT, DISCONNECT, and ERROR.<br><br>ATS10=0<cr> :<br>Disabling all of the response messages- OK, CONNECT, DISCONNECT, and ERROR.<br><br>ATS10?<cr> : To see current status of ATS10 |
| 32) | ATS11 | Enable Escape (default 1)<br>Escape sequence character enable change from on-line mode to command mode. If set to '0', transmission speed can be improved.  |
| 33) | ATS12 | Clear UART buffer at Disconnect. (default 0)<br>If set to '1', when disconnected, data stored in Promi-SD will be removed.  |
| 34) | ATS13 | Enable CDC accept (default 0)<br>If set to '0', Promi-SD will use CDC signal to let Host know Bluetooth connection status.  |

|     |       |  |
|-----|-------|--|
|     |       | If set to '1', Promi-SD will accept CDC signal from other peer (DCE-configured) Bluetooth device.  |
| 35) | ATS14 | ATS14=1<cr>: Users may use DTR/DSR lines for communications<br>ATS14=0<cr>: Users may use DTR/DSR lines for Loop-back only.<br>Default value of ATS14 is 0.  |
| 36) | ATS15 | ATS15=1<cr>:<br>If users set ATS15=1, users may use DTR signal to disconnect Bluetooth connection.<br>If ATS15=1, and DTR signal is changed from state ON to OFF, your connection will be disconnected.<br><br>ATS15=0<cr>: If ATS15=0, users may NOT use DTR signal to disconnect the Bluetooth connection. |
| 37) | ATS24 | Maximum number of inquiry result (default 10)  |
| 38) | ATS29 | Error Code for last occurred error.<br>Users can not change this value   |
| 39) | ATS31 | Page Timeout (default 300)<br>Unit: second.  |
| 40) | ATS33 | Inquiry Timeout (default 30)<br>Unit: second.  |
| 41) | ATS46 | BD address of last connected device  |